

BWImplement Co.

288 W. FRONT STREET
P.O. BOX 758
BUTTONWILLOW, CA 93206
PHONE 661-764-5254
FAX 661-764-5253
www.bwimp.com



PC3-60

42" Bed Top
9" Landslides
C-Tines

Version: 4.14.10

Operators Manual

Mulcher Information:

Serial #: _____

Date Manufactured: _____

Row Centers: _____ 60"

Bed Top: _____ 42"

Furrow Width: _____ 18"

Landslides: _____ 9"

Teeth: _____ C-Tines

Hitch Category: _____ III

PTO: _____ 1000 RPM

Tractor-end Yoke: _____ 1 3/8"

Table of Contents

B.W. Implement Company Warranty

Limited Warranty Statement.....	4
Warranty Registration Required	4
Securing Warranty Service	4
Unapproved Modifications or Attachments.....	5
Accidents and Normal Maintenance	5

Safety Guidelines

Equipment Safety and Guidelines.....	6
Safety Alert Symbol.....	7
Safety Sign Locations	8
Lighting and Marking.....	9
Safety Sign Care	9
Tire Safety	10
ADMA Recommendations	11
Before Operation.....	12
During Operation	13
Following Operation	14
Highway and Transportation Operations.....	15

Maintenance and Adjustments

Operating Instructions.....	17
Lubricating and Maintenance Instructions	17
Ordering Parts.....	17
Performing Maintenance	18
Bearing Replacement.....	19
Chain Adjustment.....	19
Machine Adjustments	20

Parts Catalog

Main Frame.....	21
Hood Assembly	22
Gear Box.....	24
Chain Drop Box.....	26
Top Drive Assembly.....	28
Top Shaft Shield Assembly	29
Top Drive and Rotor Shafts.....	30
Rotor Shaft Coupling Assembly	31
Bearing Grease Fittings.....	32
Clamp-Type Rotor and Teeth	33
Landslides and Front Bed Formers	34
Rear U-Frame	35
Smooch Plate	36
Smooch Plate	37
Adjusting Clamps.....	38
Driveline.....	39

BW IMPLEMENT COMPANY WARRANTY

LIMITED WARRANTY STATEMENT

BW Implement Company warrants to the original purchaser all new Culti-Mulch Equipment, along with attachments, to its authorized dealers and they in turn warrant the equipment to the original retail purchaser to be free from defects in material and workmanship under normal use and service for which intended for a period of one (1) season or one thousand (1000) acres of use from the warranty start date, whichever occurs first. BW Implement Company also warrants to the original purchaser all new Tillage Equipment, along with attachments, to its authorized dealers and they in turn warrant the equipment to the original retail purchaser to be free from defects in material and workmanship under normal use and service for which intended for a period of six (6) months from the warranty start date. Implements used in construction or land development are warranted for a period of ninety (90) days from the warranty start date. This warranty is valid only if the machinery is set up properly and operated in accordance with the recommendations set forth in the Operator's Manual.

Our obligation under this warranty shall be limited to repairing or replacing, free of charge to the original purchaser, any part, or defect in material and workmanship, that in our judgment shows evidence of such defect, provided further that such part shall be returned within thirty (30) days of failure to BW Implement Company, routed through the dealer from whom the purchase was made, transportation charges prepaid.

This warranty shall not be interpreted to render BW Implement liable for injury or damages of any kind or nature to persons or property. This warranty does not extend to the loss of crops, loss due to delay in planting or harvesting, or any expense or loss incurred for labor, substitute machinery, rental or for any other reason.

This warranty is subject to any existing conditions of supply that may directly affect our ability to obtain materials or manufacture replacement parts.

BW Implement reserves the right to make improvements in design or changes in specifications at any time, without incurring any obligation to owners of units previously sold.

WARRANTY REGISTRATION REQUIRED

BW Implement Company shall have no obligations under this warranty unless the completed Warranty Registration form is returned to BW Implement Company within thirty (30) days of the sale of the product.

SECURING WARRANTY SERVICE

Warranty service will be performed by any authorized BW Implement Company dealer. At the time warranty service is requested, the purchaser must present evidence showing the equipment is eligible for warranty service

UNAPPROVED MODIFICATIONS OR ATTACHMENTS

The warranty obligations of BW Implement Company shall be terminated if equipment is modified or altered and such modification or alteration has not been approved by BW Implement Company, or if the equipment has been equipped with an attachment not approved by BW Implement Company

ACCIDENTS AND NORMAL MAINTENANCE

The provisions of this warranty do not apply to any equipment or components thereof, which in the judgment of the dealer or BW implement Company has been damaged by: (1) improper use; (2) accident; (3) lack of maintenance; (4) improper storage; (5) in the case of Mulchers and Power Cultivators, when used on an articulated tractor; (6) use when the tractor PTO horsepower rating exceeds the maximum horsepower rating established by BW Implement Company; (7) if repairs have been made with parts other than those obtained through BW Implement Company; (8) any other casualty or negligence. The following items are considered "Normal Wear" items and are **NOT** covered by this warranty: Mulcher Teeth, Bed Shaper Parts, all UHMW and plastic parts, Disc Blades, Disc Scraper Blades, Chisel and Ripper points and Wear Plates, Box and Drag Scraper Blades, Shredder Flails, Til-N-Pak Rings.

Except as stated above, no dealer, employee or representative of the dealer or BW Implement Company has any authority to bind BW Implement Company to any affirmation of fact, representation, or warranty concerning BW Implement Company manufactured equipment unless made in writing and executed by the General Manager and Chief Executive Officer of BW Implement Company. No one is authorized to alter, modify or enlarge this warranty nor the exclusion, limitations and reservations except the General Manager and Chief Executive Officer of BW Implement Company.

This warranty is given in lieu of all other warranties, whether express or implied, and BW Implement Company makes no representations or warranties expressed or implied, including the implied warranties of merchantability and fitness for particular purpose, except as specifically described in the warranty.

Rev. 12/05

SAFETY...YOU CAN LIVE WITH IT

EQUIPMENT SAFETY AND GUIDELINES



Safety of the operator is one of the main concerns in designing and developing a new piece of equipment. Designers and manufacturers build in as many safety features as possible. However, every year many accidents occur which could have been avoided by a few seconds of thought and a more careful approach to handling equipment. You, the operator, can avoid many accidents by observing the following precautions in this section. To avoid personal injury, study the following precautions and insist those working with you, or for you, follow them.

In order to provide a better view, certain photographs or illustrations in this manual may show an assembly with a safety shield removed. However, equipment should never be operated in this condition. Keep all shields in place. If shield removal becomes necessary for repairs, replace the shield prior to use.

Replace any CAUTION, WARNING, DANGER or instruction safety decal that is not readable or is missing. Location of such decals is indicated in this booklet.

Do not attempt to operate this equipment under the influence of drugs or alcohol.

Review the safety instructions with all users annually.

This equipment is dangerous to children and persons unfamiliar with its operation. The operator should be a responsible adult familiar with farm machinery and trained in this equipment's operations. **Do not allow persons to operate or assemble this unit until they have read this manual and have developed a thorough understanding of the safety precautions and of how it works.**

To prevent injury or death, use a tractor equipped with a Roll Over Protective System (ROPS). Do not paint over, remove or deface any safety signs or warning decals on your equipment. Observe all safety signs and practice the instructions on them.

Never exceed the limits of a piece of machinery. Its ability to do a job, or to do so safely, is in question – **DON'T TRY IT.**

SAFETY ALERT SYMBOL

TAKE NOTE! THIS SAFETY ALERT SYMBOL FOUND THROUGHOUT THIS MANUAL IS USED TO CALL YOUR ATTENTION TO INSTRUCTIONS INVOLVING YOUR PERSONAL SAFETY AND THE SAFETY OF OTHERS. FAILURE TO FOLLOW THESE INSTRUCTIONS CAN RESULT IN INJURY OR DEATH.



THIS SYMBOL MEANS:

- ATTENTION!
- BECOME ALERT!
- YOUR SAFETY IS INVOLVED!

SIGNAL WORDS	
<p>Note the use of the signal words DANGER, WARNING, and CAUTION with the safety messages. The appropriate signal word for each has been selected using the following guidelines:</p>	<p>WARNING: Indicates a potentially hazardous situation that, if not avoided, could result in death or serious injury, and includes hazards that are exposed when guards are removed. It may also be used to alert against unsafe practices.</p>
<p>DANGER: indicates an imminently hazardous situation that, if not avoided, will result in death or serious injury. This signal word is to be limited to the most extreme situation typically for machine components, which for functional purposes, cannot be guarded.</p>	<p>CAUTION: Indicates a potentially hazardous situation that, if not avoided, may result in minor or moderate injury. It may also be used to alert against unsafe practices.</p>

If you have questions not answered in this manual, require additional copies, or the manual is damaged, please contact you dealer or B.W. Implement Co., P.O. Box 758, Buttonwillow, CA 93206. (Telephone) 661-764-5254 (FAX) 661-764-5253

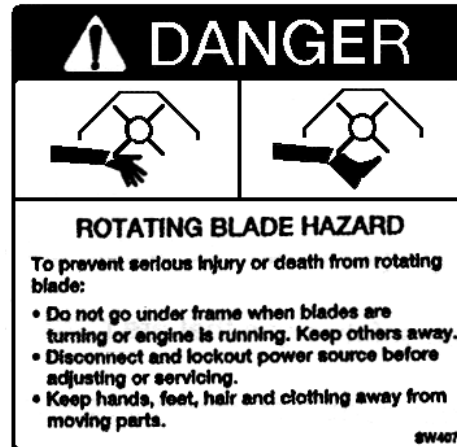
SAFETY SIGN LOCATIONS

The types of Safety Signs and locations on the equipment are shown in the illustration below. Good Safety requires that you familiarize yourself with the various Safety Signs, the type of warning and the area, or particular function related to that area, which requires your SAFETY AWARENESS.

A. DANGER ROTATING DRIVELINE

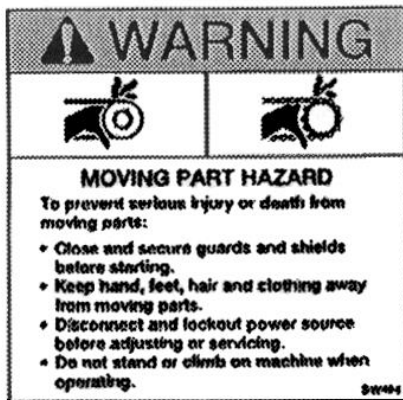


B. DANGER ROTATING BLADE HAZARD



Make sure the above decal is in place on rotating driveline. We will furnish the decals free of charge if needed.

C. WARNING MOVING PART HAZARD



REMEMBER: If Safety Signs have been damaged, removed become illegible or parts replaced without decals, new decals must be applied. New decals are available from your authorized distributor or factory.

LIGHTING AND MARKING



It is the responsibility of the customer to know the lighting and marking requirements of the local highway authorities and to install and maintain the equipment to provide compliance with the regulations. Add extra lights when transporting at night or during periods of limited visibility.

SAFETY SIGN CARE



Keep Safety Signs Clean and Legible At All Times:

- Replace safety signs that are missing or have become illegible
- Replaced parts that displayed a safety sign should also display the current sign.
- Safety signs are available from your Distributor or Dealer Parts Department or the factory.

How to Install Safety Signs:

- Be sure that the installation area is clean and dry.
- Decide on the exact position before you remove the backing paper.
- Remove the smallest portion of the split backing paper.
- Align the decal over the specified area and carefully press the small portion with the exposed sticky backing in place
- Slowly peel back the remaining paper and carefully smooth the remaining portion of the decal in place
- Small air pockets can be pierced with a pin and smoothed out using the piece of decal backing paper.

TIRE SAFETY

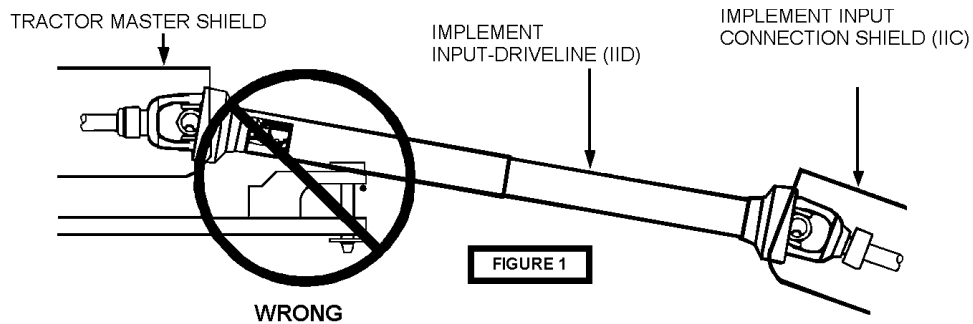


- Failure to follow proper procedures when mounting a tire on a wheel or rim can produce an explosion, which may result in serious injury or death.
- Inflating or servicing tires can be dangerous. Whenever possible, trained personnel should be called to service and/or mount tires.
- Always order and install tires and wheels with appropriate capacity to meet or exceed the anticipated weight to be placed on the equipment.

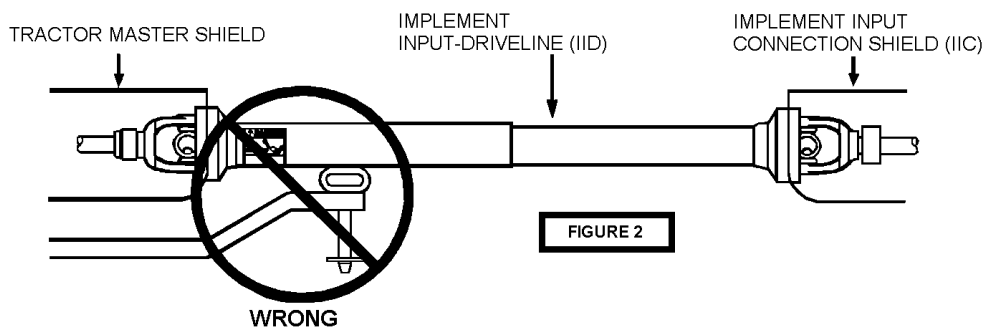
ADMA RECOMMENDATIONS

A tractor drawbar equipped with a clevis hitch (hammer-strap) can cause interference with the PTO driveline IID (Implement Input Driveline). This interference can cause serious damage to the IID guarding and the IID telescoping members. The clevis hitch on the tractor must be removed.

If this implement is attached to a tractor with a clevis hitch (hammer-strap) style drawbar, the hammer-strap must be removed to prevent damage to the IID guarding and the IID telescoping members (See Figure 1)



If this implement is attached to a tractor with an offset in the drawbar, be certain it is in the down position to prevent damage to the IID guarding and the IID telescoping members. (See Figure 2)



BEFORE OPERATION



- Carefully study and understand this manual
- Do not wear loose-fitting clothing that may catch in moving parts.
- Always wear protective clothing and substantial shoes.
- It is recommended that suitable protective hearing and (eye protection) sight protectors are worn.
- Keep wheel lug nuts or bolts tightened to specified torque.
- Assure that agricultural implement tires are inflated evenly.
- Give the unit a visual inspection for any loose bolts, worn parts or cracked welds, and make necessary repairs. Follow the maintenance safety instructions included in this manual.
- Be sure that there are no tools lying on or in the equipment.
- Do not use the unit you are sure that the area is clear, especially children and animals.
- Don't hurry the learning process or take the unit for granted. Ease into it and become familiar with your new equipment.
- Practice operation of your equipment and its attachments. Completely familiarize yourself and other operators with its operation before using.
- Use a tractor equipped with a Roll Over Protective System (ROPS) and fasten you seat belt prior to starting the engine.
- The manufacturer does not recommend usage of a tractor with the ROPS removed.
- Do not allow anyone to stand between the tongue or hitch and the towing vehicle when backing up to the equipment.

DURING OPERATION



- Beware of bystanders, **particularly children!** Always look around to make sure that it is safe to start the engine of the towing vehicle or move the unit. This is particularly important with higher noise levels and quite cab, as you may not hear people shouting.

NO PASSENGERS ALLOWED – Do not carry passengers anywhere on, or in, the tractor or equipment, except as required for operation.

- Keep hands and clothing clear of moving parts.
- Do not clean, lubricate or adjust you equipment while it is moving.
- When halting operation, even periodically, set the tractor or towing vehicle brakes, disengage the PTO, shut off the engine and **remove the ignition key.**
- Be especially observant of the operating area and terrain – watch for holes, rocks, or other hidden hazards. Always inspect the area prior to operation.
 - **DO NOT** operate near the edge of drop-offs or banks
 - **DO NOT** operate on steep slopes as overturn may result.
 - Operate up and down (not across) intermediate slopes. Avoid sudden starts and stops.
- Pick the levellest possible route when transporting across fields. Avoid the edges of ditches or gullies and steep hillsides.
- Be extra careful when working on inclines
- Periodically clear the equipment of brush, twigs or other materials to prevent buildup of dry combustible materials.
- Avoid overhead wires or other obstacles. Contact with overhead lines could cause serious injury or death.
- Avoid loose fill, rocks and holes: they can be dangerous for equipment operation or movement
- Allow for unit length when making turns.
- Do not walk or work under raised components or attachments unless securely positioned and blocked.
- Keep all bystanders, pets and livestock clear of the work area.

- Operate the towing vehicle from the operator's seat only.
- Never stand alongside of unit with engine running or attempt to start engine and/or operate machine while standing alongside of unit.
- Never leave running equipment attachments unattended
- As a precaution, always recheck the hardware on equipment following every 100 hours of operation. Correct all problems. Follow the maintenance safety procedures.

FOLLOWING OPERATION



- Following operation, or when unhitching, stop the tractor or towing vehicle, set the brakes, disengage the PTO and all power drives, shut off the engine and **remove the ignition keys.**
- Do not permit children to play on or around the stored unit.
- Make sure all parked machines are on a hard, level surface and engage all safety devices.
- Wheel chocks may be needed to prevent unit from rolling.

HIGHWAY AND TRANSPORTATION OPERATIONS



- Adopt safe driving practices
 - Keep the brake pedals latched together at all time. **NEVER USE INDEPENDENT BRAKING WITH MACHINE IN TOW AS LOSS OF CONTROL AND/OR UPSET OF UNIT CAN RESULT.**
 - Always drive at a safe speed relative to local conditions and ensure that your speed is low enough for an emergency stop to be safe and secure. Keep speed to a minimum.
 - Reduce speed prior to turns to avoid the risk of overturning.
 - Avoid sudden uphill turns on steep slopes.
 - Always keep the tractor or towing vehicle in gear to provide engine braking when going downhill. Do not coast.
 - Do not drink and drive!
- Comply with state and local laws governing highway safety and movement of farm machinery on public roads.
- Use approved accessory lighting, flags and necessary warning devices to protect operators of other vehicles on the highway during daylight and nighttime transport. Various safety lights and devices are available from your dealer.
- The use of flashing amber light is acceptable in most localities. However, some localities prohibit their use. Local laws should be checked for all highway lighting and marking requirements.
- When driving the tractor and equipment on the road or highway under 40 kph (25 mph) at night or during the day, use flashing amber warning lights and a slow moving vehicle (SMV) identification emblem.
- Plan your route to avoid heavy traffic.
- Be a safe and courteous driver. Always yield to oncoming traffic in all situations, including narrow bridges, intersections, etc.

- Watch for obstructions, overhead and to the side while transporting.
- Always operate equipment in a position to provide maximum visibility at all times. Make allowances for increased length and weight of equipment when making turns, stopping the unit, etc.

REMEMBER



Your best assurance against accidents is a careful and responsible operator. If there is any portion of this manual or function you do not understand, contact you local authorized dealer or the manufacturer.

OPERATING INSTRUCTIONS

Before operating machine in field:

1. Check oil level in main gearbox. Use only oil with 514 Primrose SAE 90 vari-Purpose Molly Seal Lubricant or the equivalent.
2. Check oil level in chain drop boxes. Use 140 All Purpose Gear Lube.
3. Check all bolts for tightness.
4. Lubricate all grease fittings.
 - a. Two fitting at chain drop boxes. **CAUTION: Use Hand Gun Only**, as air operated guns may cause damage to bearing seal.
 - b. One fitting at each rotor center support bearing.
 - c. One fitting at each driveline U joint.
 - d. One fitting at center bearing in drive assembly.

AFTER TEN (10) HOURS OF OPERATION, DISMANTLE AND GREASE THOROUGHLY.

5. If Power Cultivator is equipped with spray pump and boom assembly, be sure liquid is in pump before operating or damage to pump will result. If you do not have material in tanks, remove pump drive chain before operating.
6. After ten to twelve (10-12) hours of operation:
 - a. Re-tighten all bolts.
 - b. Special attention should be given to main gearbox mounting bolts.

LUBRICATING INSTRUCTIONS & MAINTENANCE INSTRUCTIONS

Each ten to twelve (10-12) hours of operation.

1. Check oil level in main gearbox or more often if oil leakage appears at seal areas.
2. Lubricate all grease fittings.
3. Remove front or rear half of driveline to check for dirt, clean and grease.
4. Check oil level in chain drop boxes. Fill if necessary.

INSTRUCTIONS FOR ORDERING PARTS

When ordering parts give the part number, including prefix and suffix letters. To facilitate identifications of these parts, "Serial Numbers" assigned to machines should be furnished. Claims for shortage or error in handling of an order for parts must be made upon receipt of the goods.

Phone – (661) 764-5254

Fax – (661) 764-5253

PERFORMING MAINTENANCE



Good maintenance is your responsibility. Poor maintenance is an invitation to trouble.

- Make sure there is plenty of ventilation. Never operate the engine of a vehicle in closed building. The exhaust fumes may cause asphyxiation.
- Before working on this machine, stop the towing vehicle, set the brakes, disengage the PTO and all power drives, shut off the engine and **remove the ignition keys**.
- Be certain all moving parts on attachments have come to a complete stop before attempting to perform maintenance.
- **Always** use a safety support and block the wheels. Never use a jack to support the machine.
- Always use the proper tools or equipment for the job at hand.
- Use extreme caution when making adjustments.
- Replace all shields and guards after servicing and before moving.
- After servicing, be sure all tools, parts and service equipment are removed.
- Do not allow grease or oil to build up on any machine.
- When replacing hex bolts and nuts, always use the grade specified. Never replace hex bolts with less than grade five (5) bolts unless otherwise specified in this manual.
- Where replacements parts are necessary for periodic maintenance and servicing, genuine factory replacement parts must be used to restore your equipment to original specifications. The manufacturer will no claim responsibility for use of unapproved parts and/or accessories and other damages as a result of their use.
- If equipment has been altered in any way from original design, the manufacturer will not accept any liability for injury or warranty.
- A fire extinguisher and first aid kit should be kept readily accessible while performing maintenance on this equipment.

BEARING REPLACEMENT

When bearing replacement is necessary proceed as follows:

First drain chain box.

1. Remove chain box cover.
2. Loosen top shaft bearing mounting bolts.
3. Loosen bearing adjusting bolts to loosen chain.
4. Remove chain.
5. Remove three sprocket hub bolts.
6. Use these bolts to press sprocket off the hub, alternating pressure on bolts to eliminate breaking bolts. If sprocket does not loosen from hub:
7. When assembling, care should be taken to assure proper tightening of the sprocket hub. This can be accomplished by alternating bolts while tightening; using a soft, flat face punch, drive the hub into the sprocket. Alternate this procedure several times to securely set the hub into the sprocket.
8. Do not over-tighten chain box cover bolts. About 25 foot-pounds is sufficient.
9. Fill chain drop box to oil level. (**140 General Purpose Lube**)

TO CHECK CHAIN ADJUSTMENT:

- Remove inspection plate from chain drop box cover.
- Chain should deflect ½” when approximately 40 pounds of pressure is applied.
- If adjustment is necessary, loosen the four tip bearing bolts. Take up adjusting bolt until chain is in proper adjustment. Re-tighten top bearing bolts.

ADJUSTMENTS

A. Hood Assembly:

1. Hoods are adjusted for tunnel height in cultivating, and for smooch plates in pre-plant mulching.
2. All three units should be moved at one time for uniform depth.
3. Each hood assembly is held in place by two U-frames with clamps (see Page 35, Ref. 1 and 5, and Page 37, Ref. 5) and adjustment rods (see Page 35, Ref. 5 and 6). To adjust hood height, adjust upper or lower jam nuts on all- thread. Adjust amount desired on all U-frame standards involved in this adjustment. Loosen clamp, tighten opposite jam nut and retighten clamp.
4. To move mulcher adjustment, use tractor hydraulics.

B. Landslides:

1. Landslides should be kept as close as possible to the hoods to prevent soil from coming out. (see Page 35, Ref. 4)

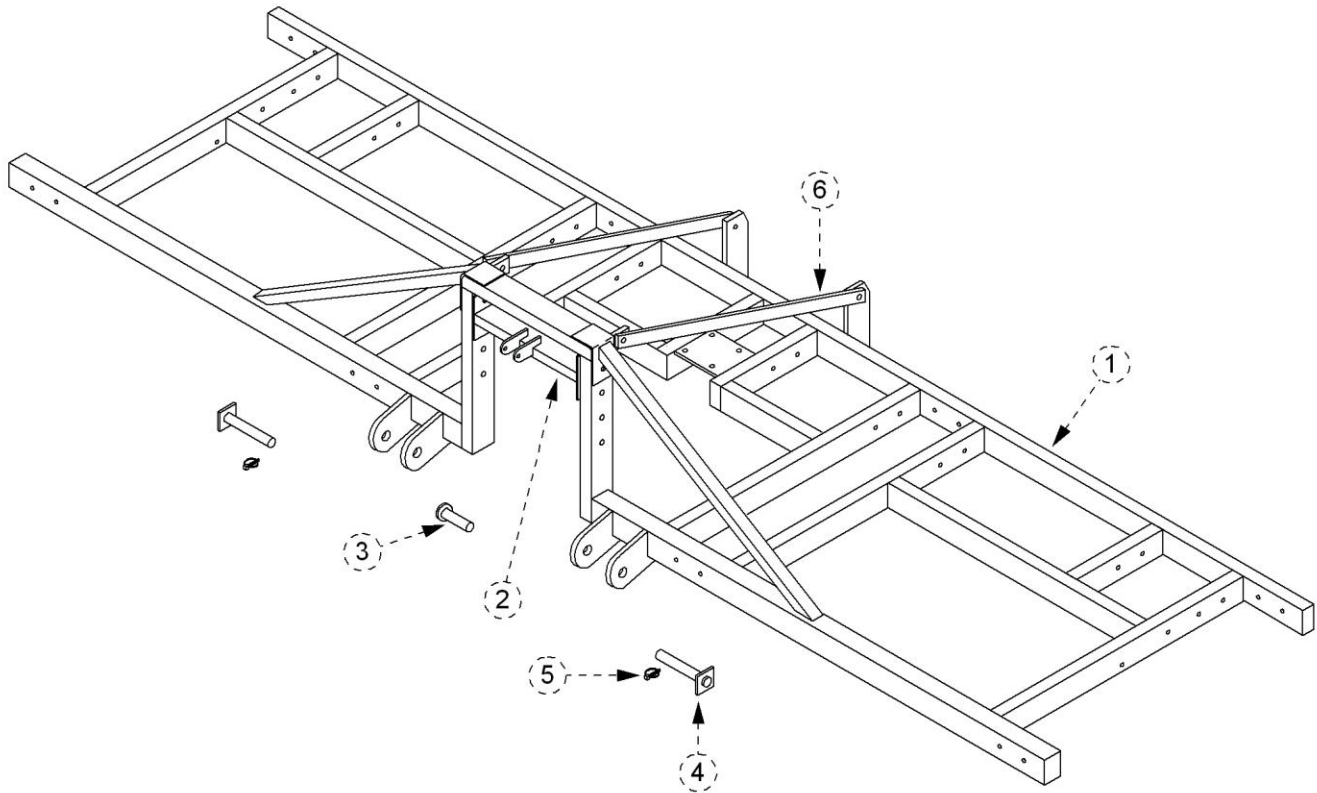
C. Smooch Plate:

1. For the front of the smooch plate adjustment, use procedure outlined in A-3 above. Hood adjustments will affect the smooch plate. (see Page 35, Ref. 1 and Ref. 5, and Page 36, Ref. 4 and 6)
2. The rear of the smooch plate is adjusted with a turnbuckle. Always tighten jam nut on turnbuckles when finished with adjustments. (see Page 36, Ref. 5)
3. All three of these units should be adjusted as near alike as possible.

D. Skid Frame Adjustment

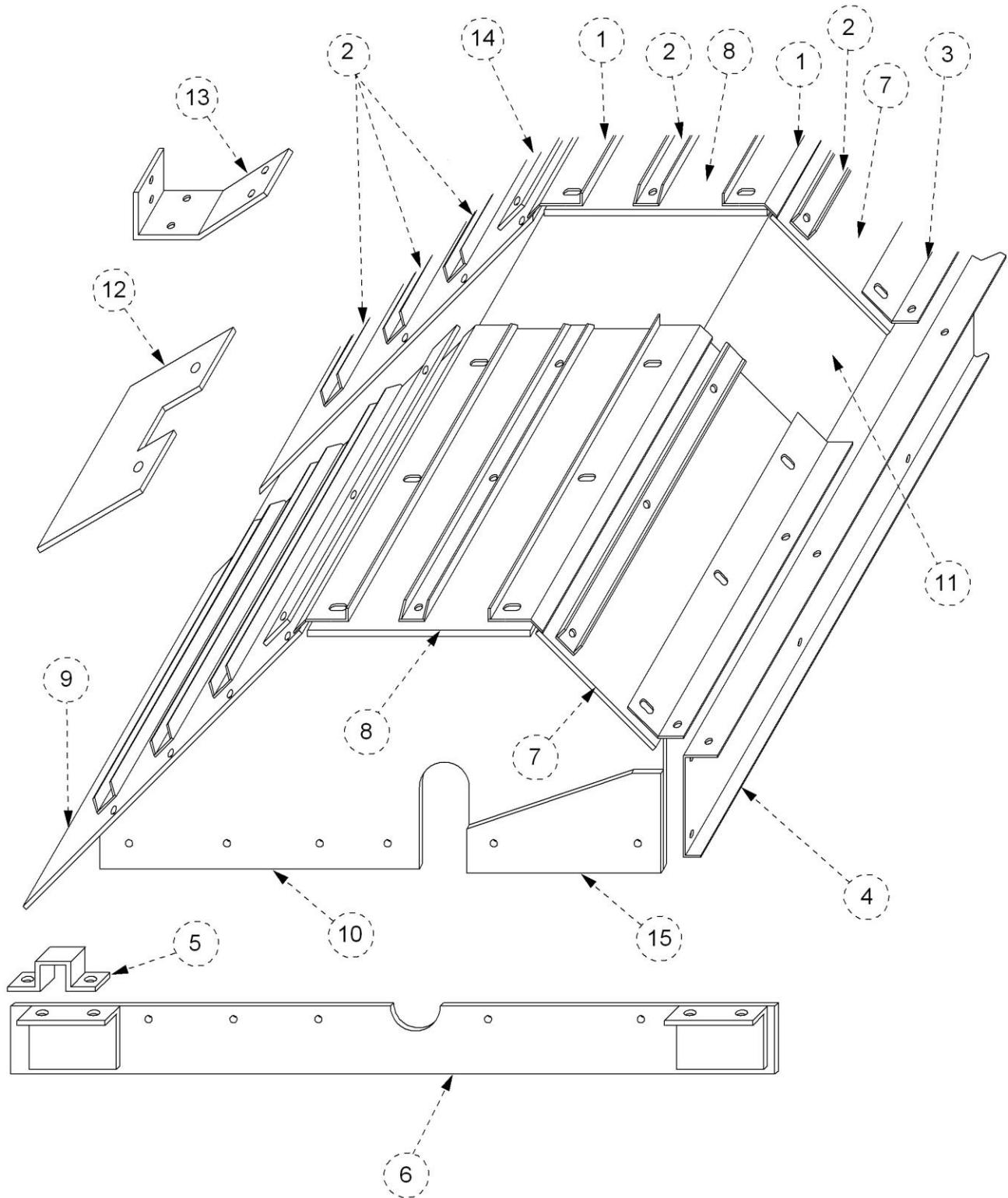
1. Skid Frame assemblies are adjusted to accommodate rotor depth in bed.
2. Skid Frames are adjusted in the same manner as the hoods. (see Page 35, Ref. 2) Adjust upper or lower jam nuts on all thread. Adjust amount desired on all Skid Frame standards involved in this adjustment. Loosen clamp, tighten opposite jam nut and retighten clamp.

Main Frame



Ref.	Part No.	Description
1	6001-1	Main Frame
2	6000-106XH	3 rd Point Top Hitch 2 - $\frac{3}{4}$ " x 3 $\frac{1}{2}$ " Cap Screw 2 - $\frac{3}{4}$ " x 4" Cap Screw
3	6000-108	Top 3 rd Point Pin
4	6000-109	Hitch Pin
5	DKP-SD-1	Lynch Pin
6	6000-190-360	Top Mast Brace 2 - $\frac{3}{4}$ " x 2 $\frac{1}{2}$ " Cap Screw

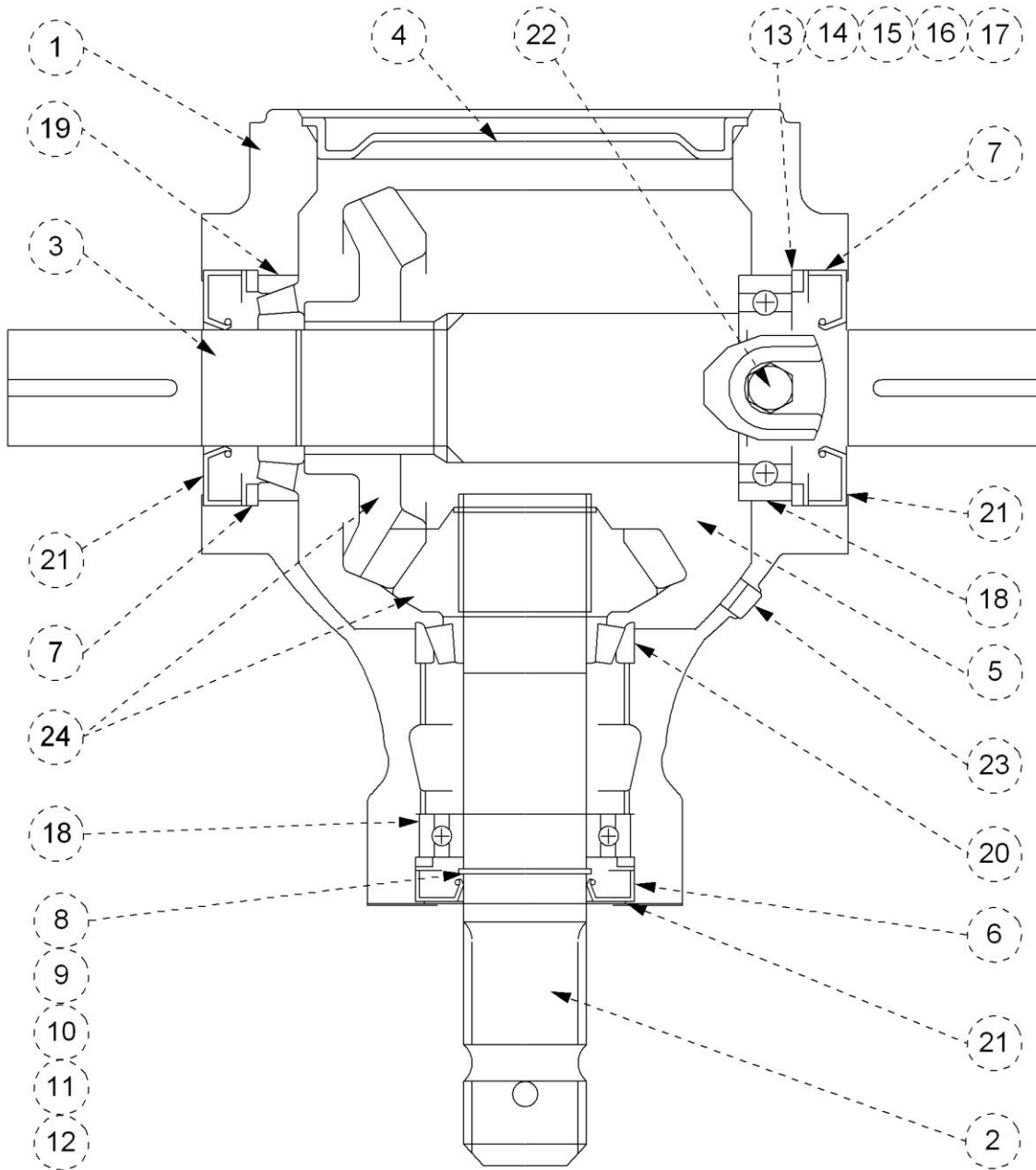
Hood Assembly



Hood Assembly

Ref.	Part No.	Description
1	6000-130	Hood Corner Brace
2	6000-127	Hood Stiffener Brace
3	6000-129	Hood Hold Down Plate
4	6000-118	Front Hood Plate
5	6000-210	1 ½" Bar Clamp, 2" wide
6	6000-120 6000-121	Hood Side Mounting Support – LH Hood Side Mounting Support – RH
7	6000-9522	Front UHMW Hood Liner
8	6000-1322	Top UHMW Hood Liner
9	6000-2322S	Rear UHMW Hood Liner
10	4000-134 4000-135	UHMW Hood Side – RH UHMW Hood Side – LH
11	6000-115	Hood Support Bridge
12	6000-243	UHMW Filler Plate
13	6000-116	Bridge Rear Mounting Bracket
14	6000-125	Rear Support Strap
15	4000-131L 4000-131R	Side Stiffener – LH Side Stiffener – RH

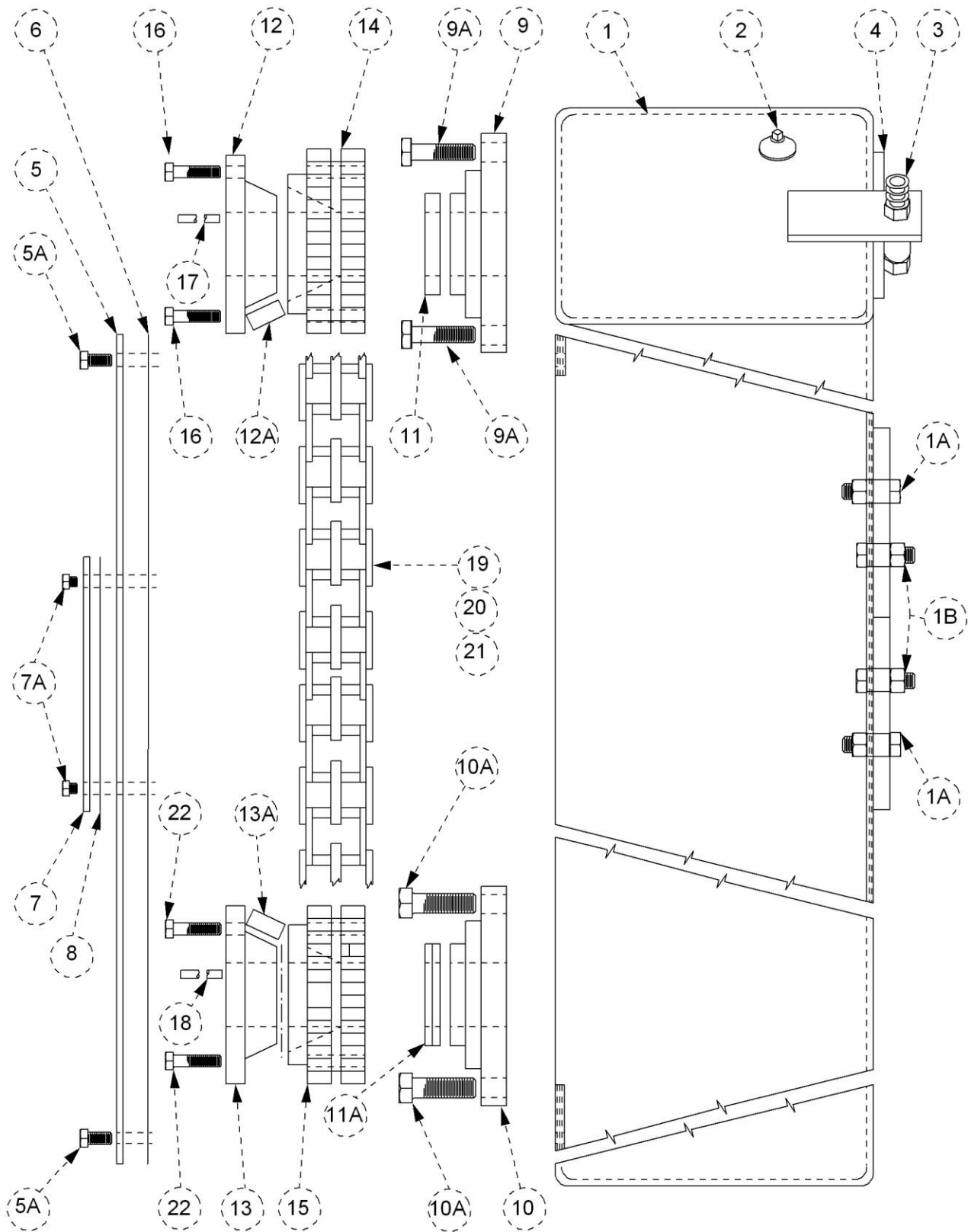
Gear Box



Gear Box
Bondioli & Pavesi
1400-2100

Ref.	Part No.	Description
1	1400-2BP	Gear Box Housing
2	1400-468BP	Input Shaft
3	1400-193-28BP	Output Shaft
4	1400-490BP	Gear Box Cover
5	1400-2113BP	Cirdlip
6	1400-3308BP	Snap Ring
7	1400-3309BP	Snap Ring
8	1400-5000BP	Ring
9	1400-5001BP	Ring
10	1400-5002BP	Ring
11	1400-5003BP	Ring
12	1400-5004BP	Ring
13	1400-5005BP	Ring
14	1400-5006BP	Ring
15	1400-5007BP	Ring
16	1400-5008BP	Ring
17	1400-5009BP	Ring
18	1400-2754BP	Ball Bearing
19	1400-2721BP	Tapered R. Bearing
20	1400-2726BP	Tapered R. Bearing
21	1400-3146BP	Oil Seal
22	1400-960	Breather
23	1400-3138BP	Oil Plug
24	1400-446BP	Bevel Gear

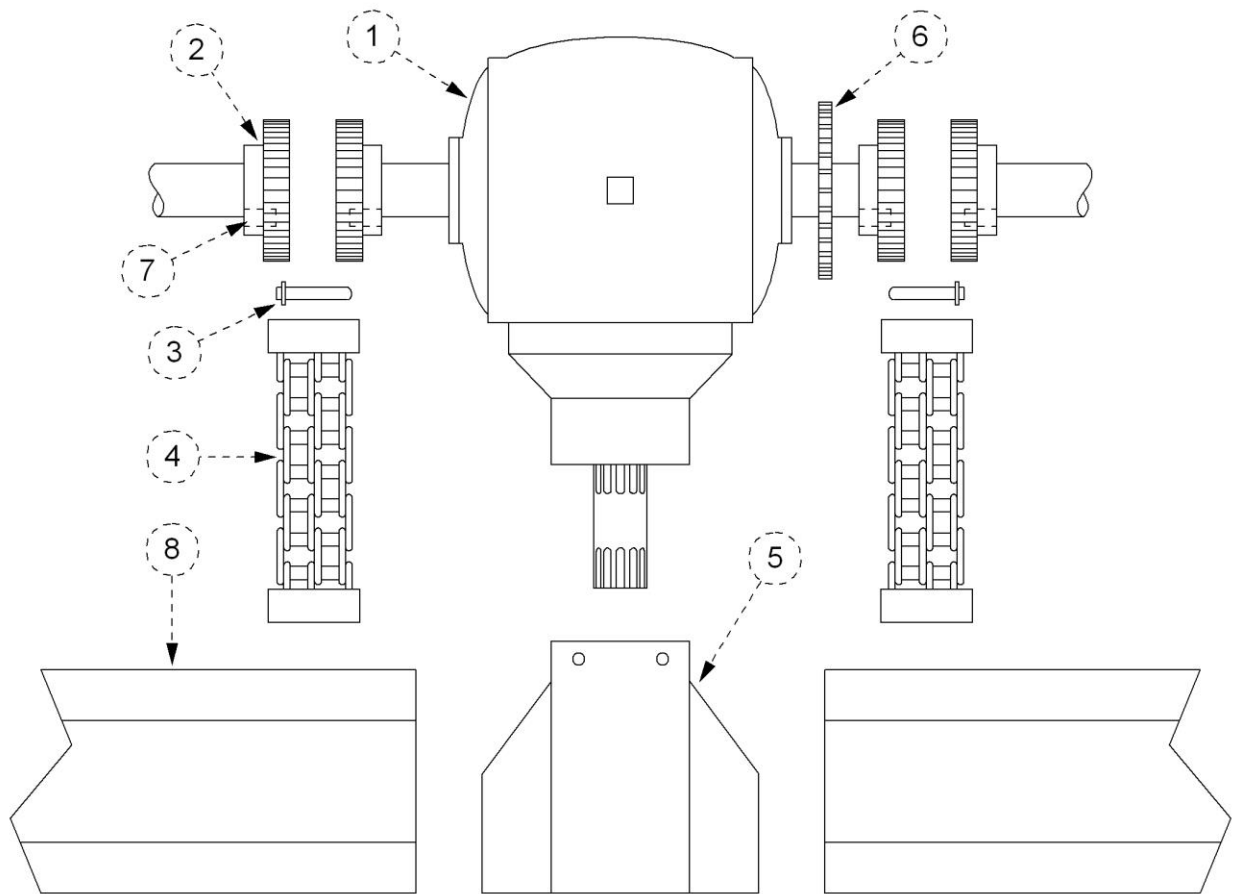
Chain Drop Box



Chain Drop Box and Drive Assembly – 1000 PTO

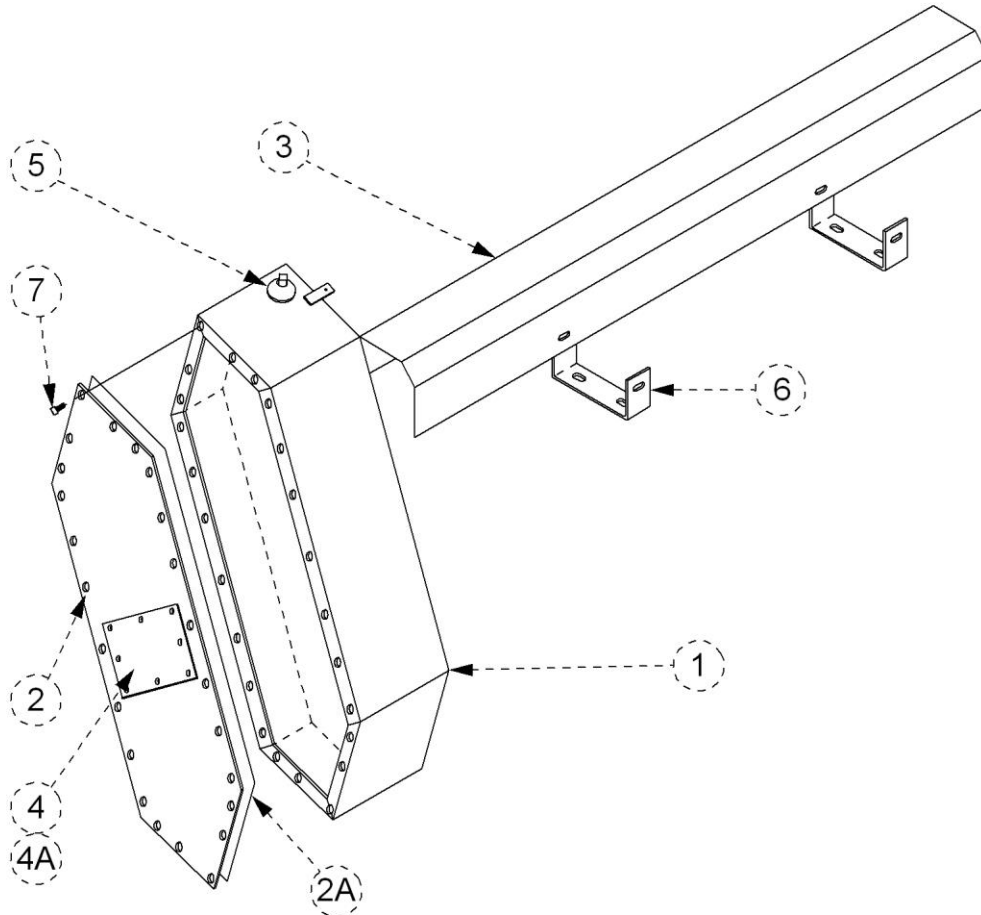
Ref.	Part No.	Description
1	6000-150 6000-151	Chain Drop Box – LH Chain Drop Box – RH
1A	-----	(4) NF Cap Screws – 9/16” x 1 ½” with Hex Nuts and Lock Washers
1B	-----	(4) NF Cap Screws – ½” x 3 ½” with Hex Nuts and Lock Washers
2	1400-012	Oil Fill Plug – ¾”
3	1400-400	Bearing Adjustment Bolt
4	1400-1411	Bearing Adjustment Plate
5	1450-124L 1450-124R	Box Cover Lid – LH Box Cover Lid – RH
5A	-----	(24) ¾” x ¾” NF Cap Screw & Int. Lock Washer
6	1450-125	Box Cover Lid Gasket
7	1400-126	Inspection Plate
7A	-----	(24) 5/16” x ½” NF Cap Screw & Int. Lock Washer
8	1400-127	Inspection Plate Gasket
9	1400-2869	Bearing , Top
9A	1400-390	Bolt Special – w/ NF – 9/16” Lock Washer – 4 Req.
10	1450-3269	Bearing, Bottom
10A	-----	(4) NF Cap Screws – 5/8” x 2” w/ Hex Nuts & Lock Washers
11	1400-402	Spacer, Top
11A	-----	2” Machine Washers, Use as Req. to Align Sprockets
12	1450-2380	Bushing, Top
12A	1450-401	Key, ¾” x ½” – 2” Long
13	1450-2386	Bushing, Bottom – 1000 PTO
13A	1450-404	Key, ½” x ¾” – 1 ⅛” Long
14	1450-2214	Sprocket, Top – 1000 PTO
15	1450-2224	Sprocket, Bottom – 1000 PTO
16	1450-2383	Bolt with Lock Washer
17	1450-402	Key, Top – ¾” x 3 ¾”
18	1450-403	Key, Bottom – ½” x 2 ¾”
19	1450-2482	Chain – D80
20	1450-406	Conn. Link – D80
21	1450-407	Offset Link – D80
22	1450-2385	Bolt, with Lock Washer

Gear Box, Shaft Shield, and Top Drive Couplings



Ref.	Part No.	Description
1	1400-2100	Gear Box
2	1400-1257	Coupling Half, 1 – Set Screw, 3/8” x 1 1/4” 1 – Set Screw, 3/8” x 1 1/2” 2 – NC Hex Jam Nuts
3	1400-2256	Connecting Link Pin with Keeper
4	1400-1256	Coupling Chain
5	1400-471BP	Front Side Gear Box Shield
6	1400-1254S	Pump Sprocket
7	1400-401	Key, 3/8” x 2”
8	6000-140	Top Drive Shaft Shield

Chain Drop Box and Shaft Shield



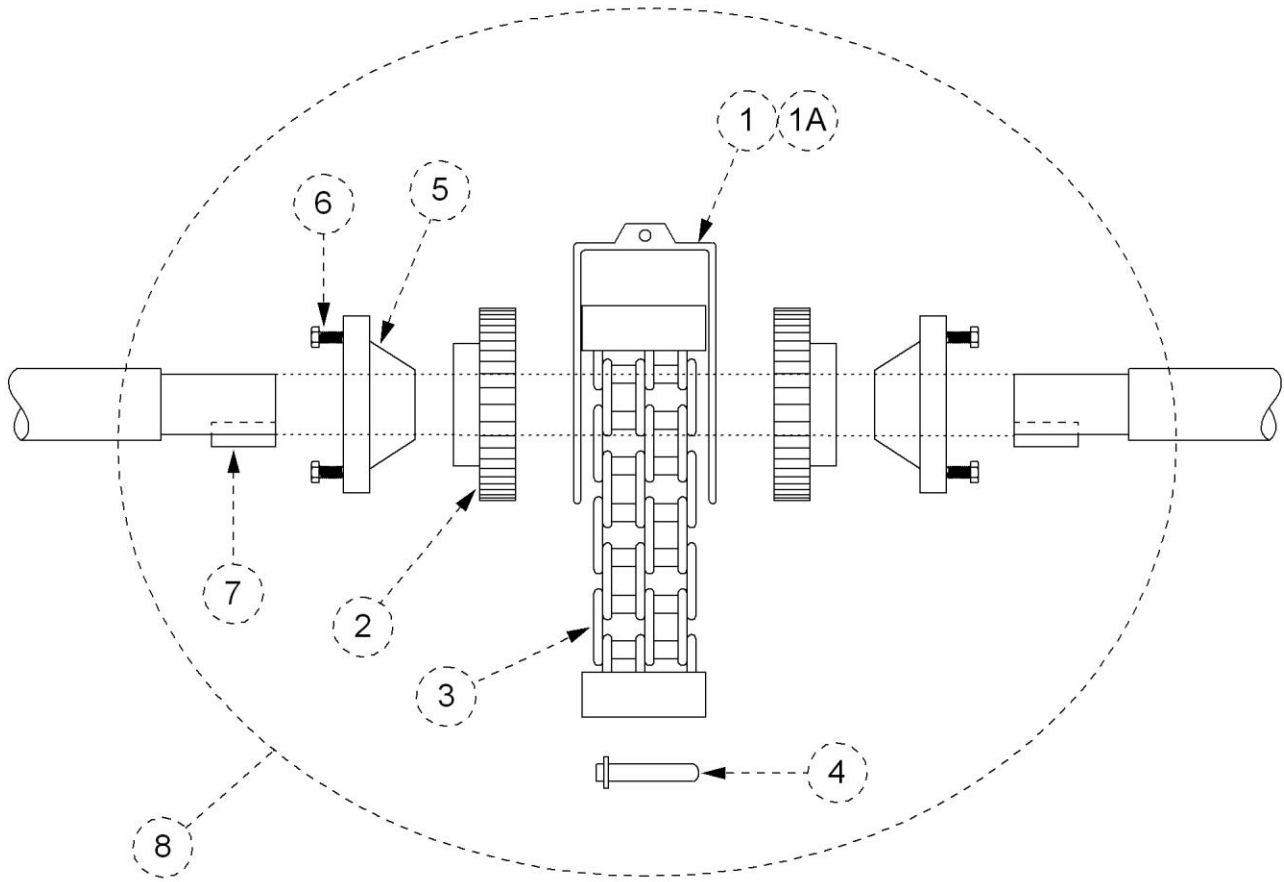
Ref.	Part No.	Description
1	6000-150 6000-151	Chain Drop Box – LH Chain Drop Box – RH (shown)
2	1450-124L 1450-124R	Chain Drop Box Lid – LH Chain Drop Box Lid – RH (shown)
2A	1450-125	Chain Drop Box Gasket
3	6000-140	Top Shaft Shield
4	1400-126	Inspection Plate
4A	1400-127	Inspection Plate Gasket
5	1400-012	Oil Fill Plug
6	1400-470	Top Shaft Shield Mounting Bracket
7	-----	3/8" x 3/4" NF Screw and Lock Washer

Top Drive Shaft and Rotor Shafts



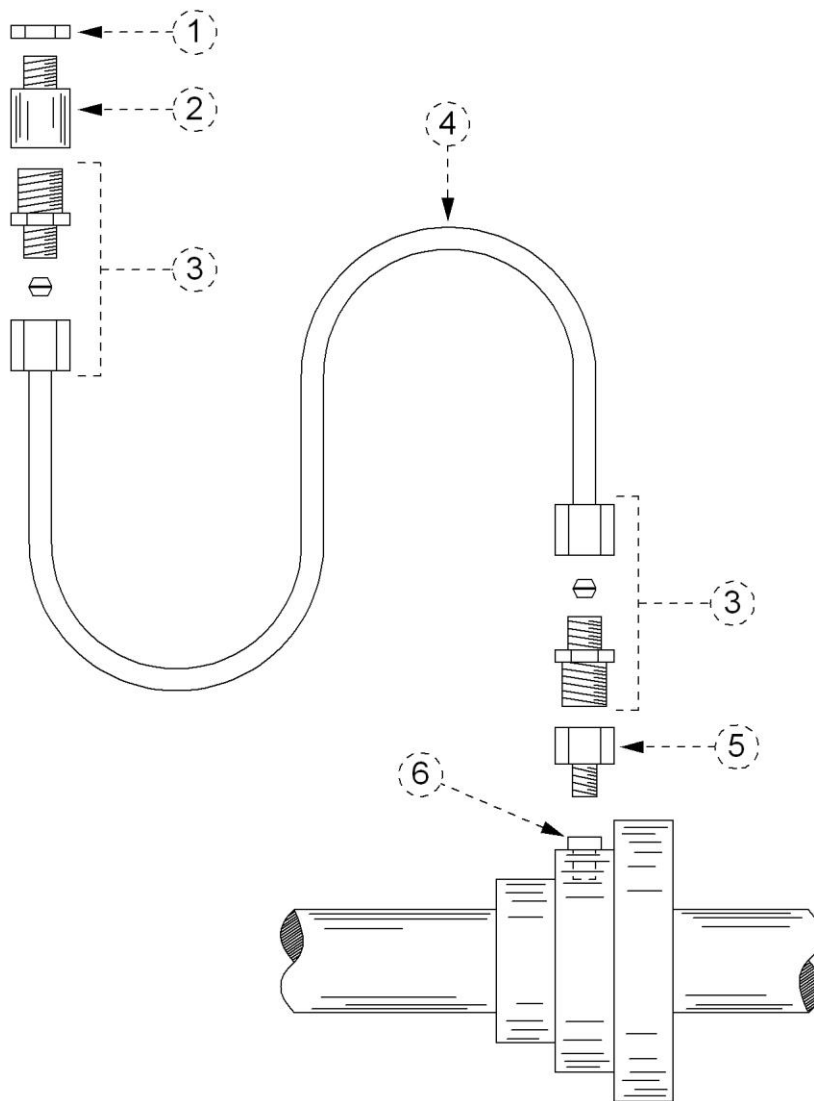
Ref.	Part No.	Description
1	6000-142	Top Drive Shaft
2	6000-144	Rotor Shaft, LH
3	6000-146	Rotor Shaft, Center
4	6000-148	Rotor Shaft, RH

Rotor Shaft Coupling Assembly



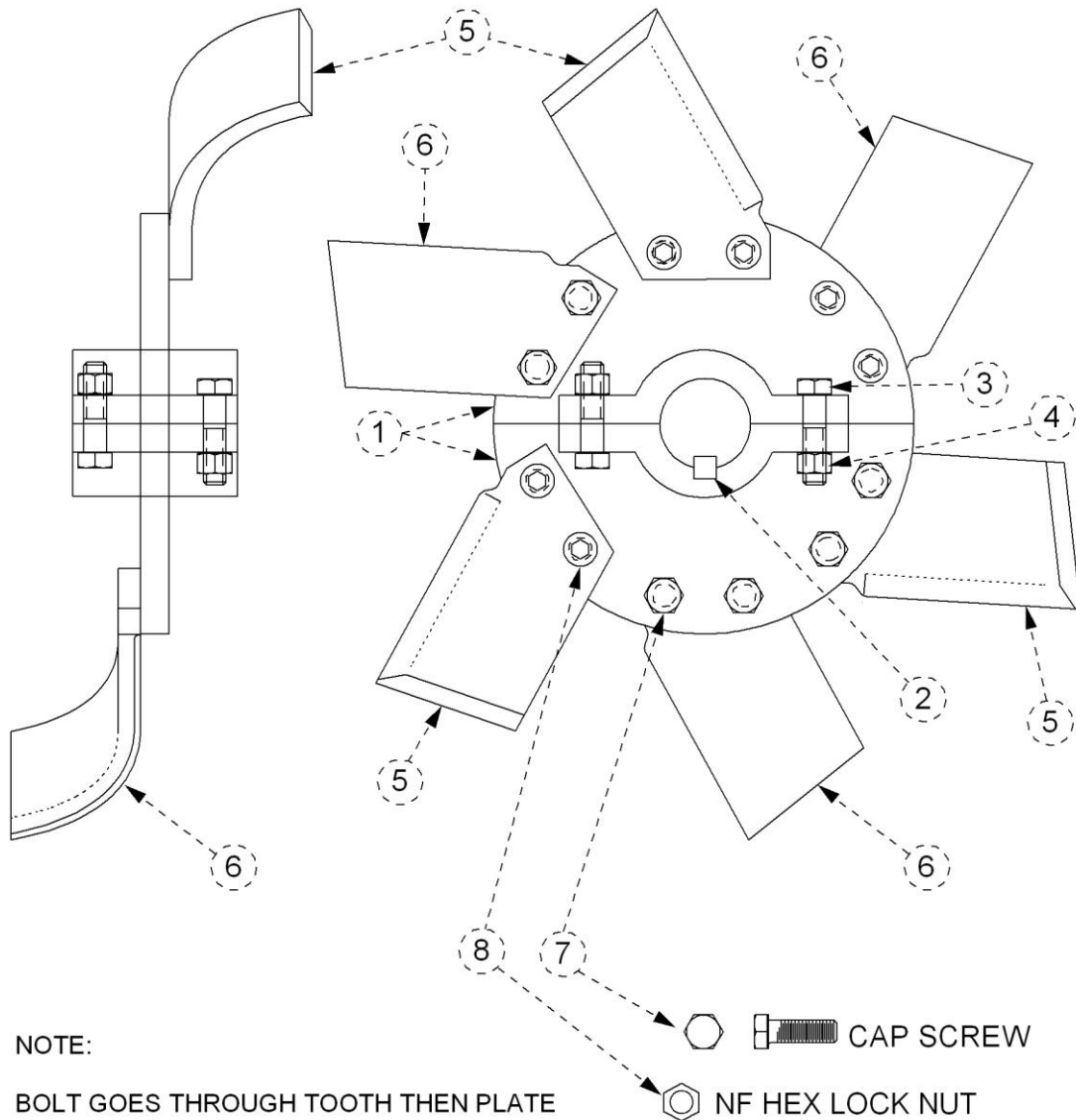
Ref.	Part No.	Description
1	1400-611	Cover – AL60 (Includes Ref. 1A)
1A	1400-613	Cover Seal Kit
2	1400-610	Coupling Half – 6020XB
3	1400-606	Coupling Chain – 6020
4	1400-2256	Connecting Pin, w/ Keeper
5	1400-612	2" Bushing – B1X2 (Includes 1 of Ref. 7 and 3 of Ref. 6)
6	1400-616	Bolt (3 Req.)
7	1400-615	Key – ½" x 11/16" x 2"
8	1400-620K	Coupling Assembly Complete

Bearing Grease Fittings



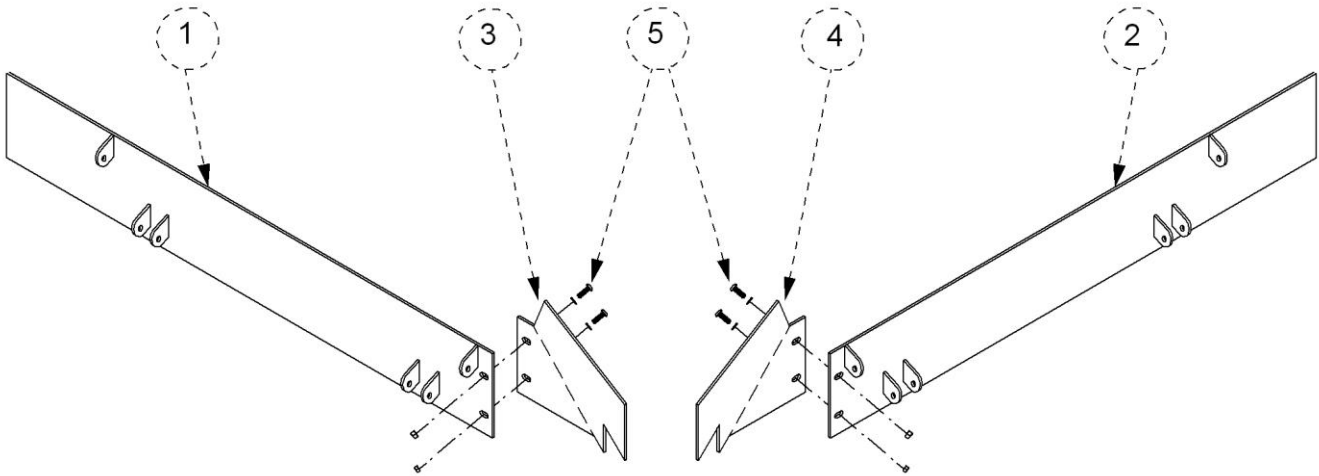
Ref.	Part No.	Description
1	1409-10	Nut
2	1409-11	Adapter
3	1409-12	Compressor Connector (68 x 3)
4	1409-14	Tube – 3/16" x 10"
5	1409-15	Adaptor – For 1400-2869 – 1 3/4" Bearing
	1409-18	Adaptor – For 1450-3269 – 2" Bearing
6	1409-16	Lock Pin – For 1400-2869 – 1 3/4" Bearing
	1409-17	Lock Pin – For 1450-3269 – 2" Bearing

Clamp-Type Rotor & Teeth



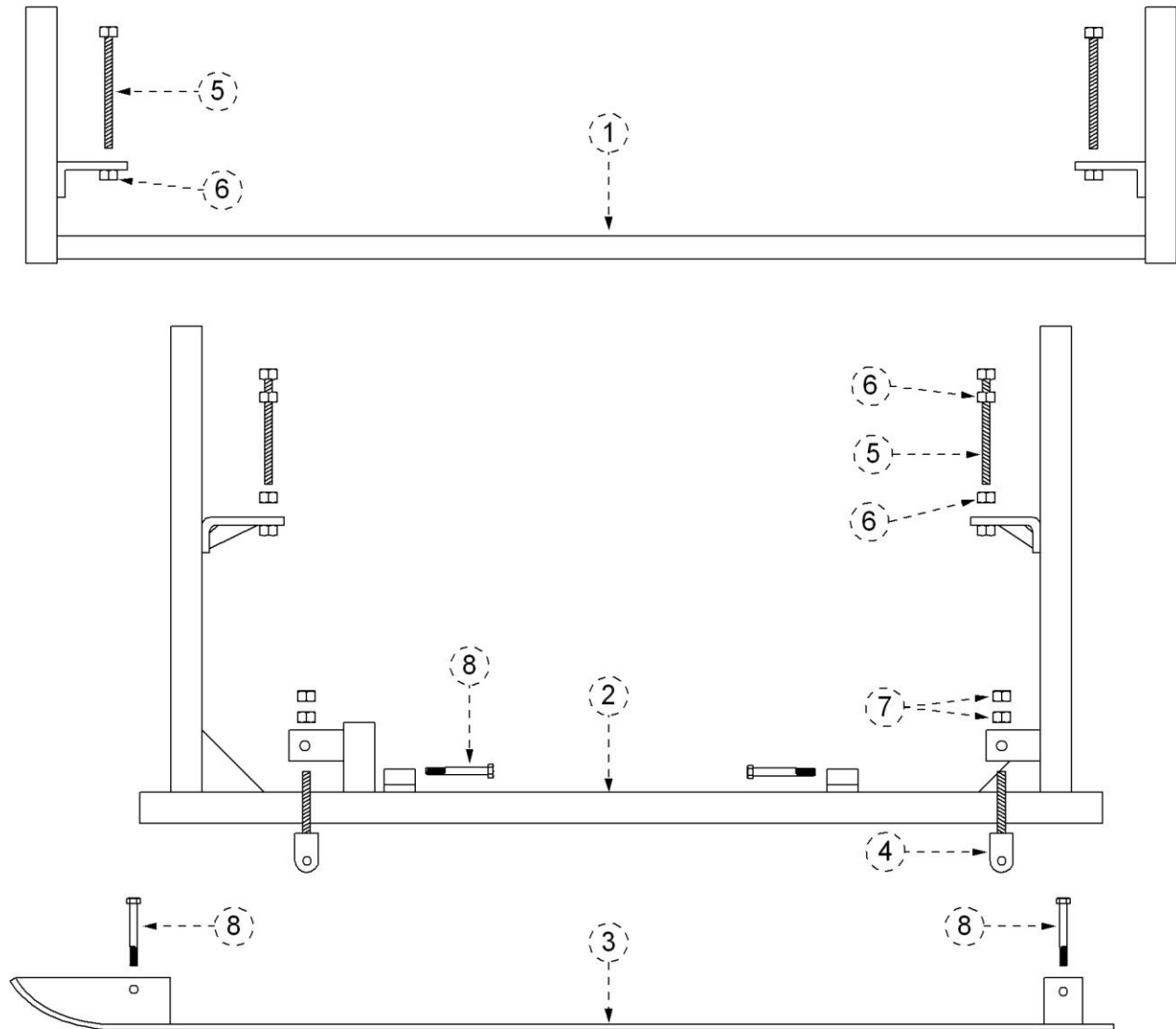
Ref.	Part No.	Description
1	6000-159	Rotor Disc – 15 req.
2	6000-157	Rotor Disc Key
3	6000-158	½" x 2" NF Cap Screw
4	1400-139LN	½" NF Hex Lock Nut
C-Tine Teeth		
5	6000-101C	LH – 3 per disc, 45 total
6	6000-102C	RH – 3 per disc, 45 total
7	1400-138	½" x 1 ½" NF Cap Screw
8	1400-139LN	½" NF Hex Lock Nut

Landslides and Front Bed Formers



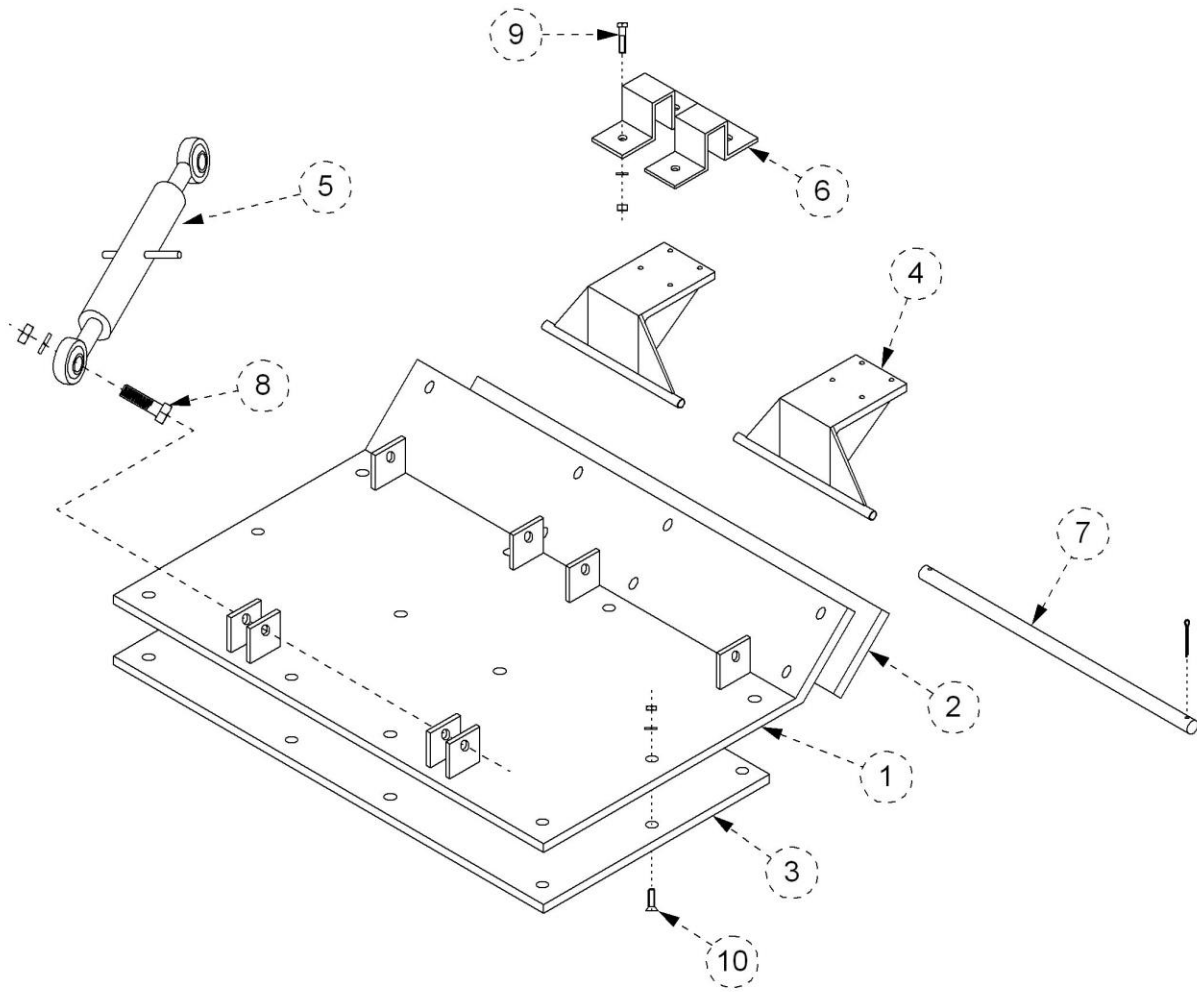
Ref.	Part No.	Description
1	6000-170	Landslide, RH
2	6000-171	Landslide, LH
3	6000-172	Bed Former Side Plate, RH
4	6000-173	Bed Former Side Plate, LH
5	-----	½" x 1 ½" Carriage Bolt

Rear U-Frame, Skid Frame, and Skid



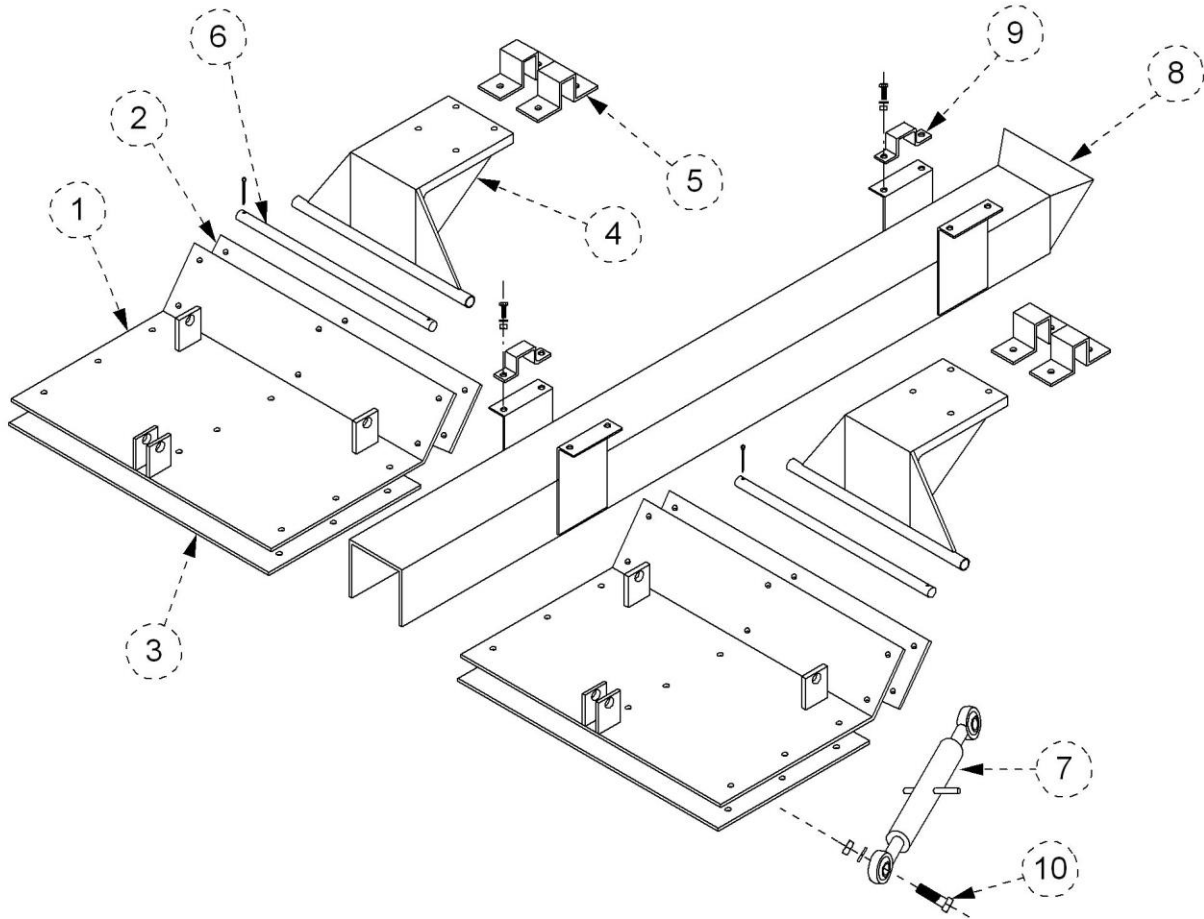
Ref.	Part No.	Description
1	6000-205	U-Frame
2	6000-202	Skid Frame – Center (18" Furrow)
	6000-202L	Skid Frame – LH (18" Furrow)
	6000-202R	Skid Frame – RH (18" Furrow)
3	6000-201	Skid
4	6000-203	Landslide Adjustment Rod (18" Furrow)
5	6000-128	Depth Adjustment Rod
6	6000-136	5/8" Acme Hex Nut
7	-----	1/2" NC Hex Nut
8	-----	1/2" x 3 1/2" NC Cap Screw

Smooch Plate



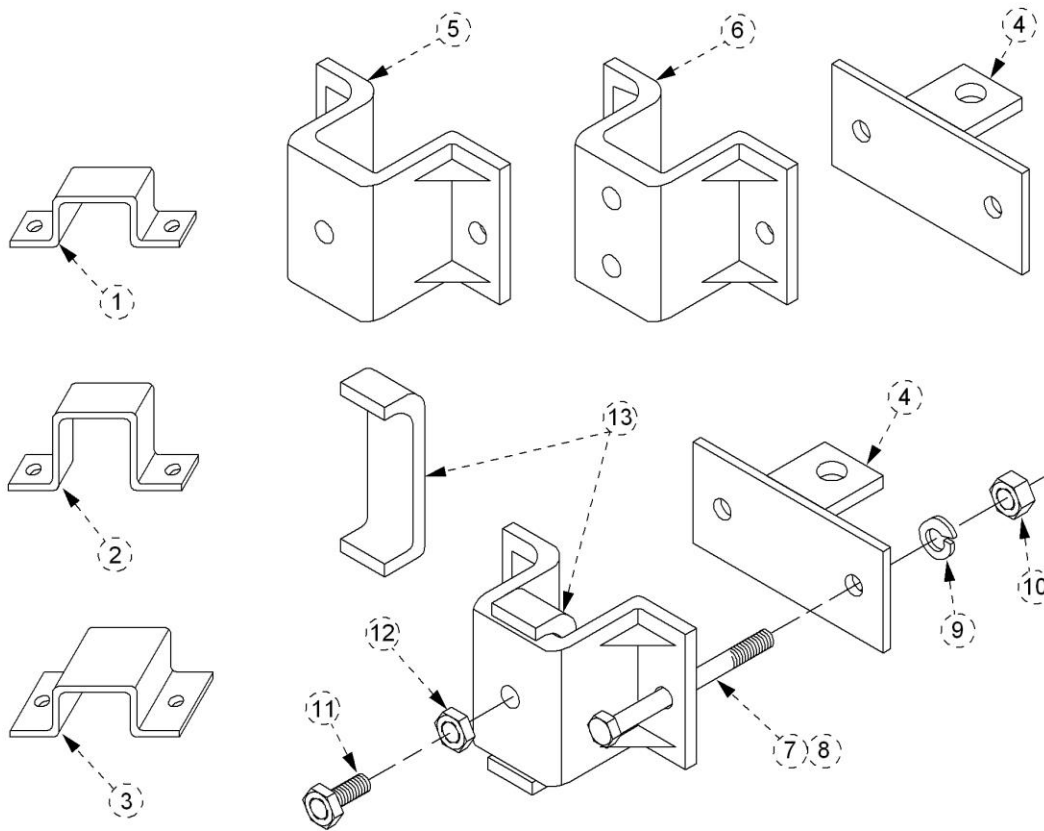
Ref.	Part No.	Description
1	6000-241M	Smooch Plate
2	6000-5541	UHMW Wear Plate – Front
3	6000-1041	UHMW Wear Plate – Bottom
4	6000-235	Smooch Plate Mounting Bracket – 2 per plate
5	6000-237X	Turnbuckle – 2 per plate
6	6000-210	1 1/2" Sq. Bar Clamp – 2" Wide
7	6000-239	Pivot Pin
8	----	1/2" x 1 1/2" NC Hex Bolt
9	----	3/8" x 1 1/2" NC Hex Bolt
10	4000-160	3/8" x 1 1/4" Flat Head Stove Bolt with Lock Washer and Nut

Smooch Plate and Tunnel Assembly



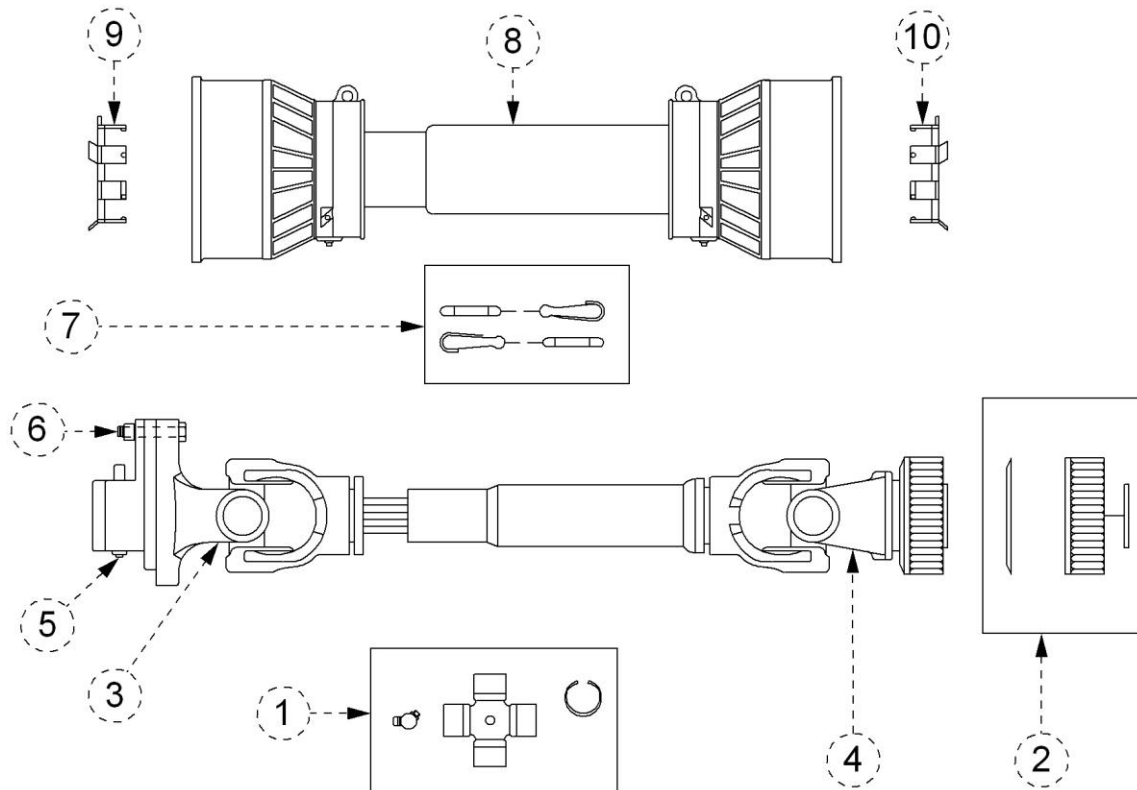
Ref.	Part No.	Description
1	6000-230M	Smooch Plate
2	6000-5518	UHMW Wear Plate – Front
3	6000-1018	UHMW Wear Plate – Bottom
4	6000-235	Smooch Plate Mounting Bracket
5	6000-210	1 ½” Sq. Bar Clamp – 2” Wide
6	6000-239	Pivot Pin
7	6000-237X	Turnbuckle
8	6000-163	Cultivating Tunnel – 5”
9	6000-165	1 ½” Sq. Bar Clamp – 1” Wide
10	-----	½” x 1 ½” NC Hex Bolt

Adjusting Clamps



Ref.	Part No.	Description
1	6000-165	1 ½" Sq. Bar Clamp – 1" Wide (for Tunnels)
2	6000-210	1 ½" Sq. Bar Clamp – 2" Wide (for Hoods & Smooch Plates)
3	6000-166	2" Sq. Bar Clamp – 1" Wide (for outside Skid Frames)
4	6000-212	Adjusting Rod Bracket
5	6000-215	Adjusting Clamp – 1 Set Screw
6	6000-215-2	Adjusting Clamp – 2 Set Screw
7	-----	9/16" x 3 ½" NC Cap Screw – Grade 5 (for 2" x 4" Bar)
8	-----	9/16" x 4 ½" NC Cap Screw – Grade 5 (for 3" x 4" Bar)
9	-----	9/16" Lock Washer
10	-----	9/16" NC Hex Nut
11	6000-220	Hex HD Set Screw – 5/8" x 1 ½" – Grade 8
12	-----	5/8" NC Hex Jam Nut
13	6000-221	Adj. Clamp Anti-Slip Bracket

Driveline 1000 PTO



Ref.	Part No.	Description
*	1400-702BP	Complete Driveline – 54” (1000 PTO)
1	1400-4106	Cross Kit
2	1400-432BP	Locking Collar Kit – Tractor End
3	1400-425BP	Yoke – Gear Box End
4	1400-413BP8	Yoke – Tractor End
5	1400-454BP	Lock Pin Kit – Gear Box End
6	1400-429BP8	Shear Bolt
7	1400-555	Support Chain
8	1400-7212BP	Safety Shield
9	1400-508BP8	Nylon Bearing – Small
10	1400-520BP8	Nylon Bearing – Large