

BWImplement Co.

288 W. FRONT STREET
P.O. BOX 758
BUTTONWILLOW, CA 93206
PHONE 661-764-5254
FAX 661-764-5253
www.bwimp.com



RT24PHD Series

24" x 6 mm Blades
9" Spacing
1 1/2" Axle

Version: 10.29.10

Operators Manual

Disk Information:

Model #: _____

Serial #: _____

Date Manufactured: _____

Width of Cut: _____

No. of Blades: _____

Blade Size: _____

Approx. Weight: _____

Options: _____

BW IMPLEMENT COMPANY WARRANTY

LIMITED WARRANTY STATEMENT

BW Implement Company warrants to the original purchaser all new Culti-Mulch Equipment, along with attachments, to its authorized dealers and they in turn warrant the equipment to the original retail purchaser to be free from defects in material and workmanship under normal use and service for which intended for a period of one (1) season or one thousand (1000) acres of use from the warranty start date, whichever occurs first. BW Implement Company also warrants to the original purchaser all new Tillage Equipment, along with attachments, to its authorized dealers and they in turn warrant the equipment to the original retail purchaser to be free from defects in material and workmanship under normal use and service for which intended for a period of six (6) months from the warranty start date. Implements used in construction or land development are warranted for a period of ninety (90) days from the warranty start date. This warranty is valid only if the machinery is set up properly and operated in accordance with the recommendations set forth in the Operator's Manual.

Our obligation under this warranty shall be limited to repairing or replacing, free of charge to the original purchaser, any part, or defect in material and workmanship, that in our judgment shows evidence of such defect, provided further that such part shall be returned within thirty (30) days of failure to BW Implement Company, routed through the dealer from whom the purchase was made, transportation charges prepaid.

This warranty shall not be interpreted to render BW Implement liable for injury or damages of any kind or nature to persons or property. This warranty does not extend to the loss of crops, loss due to delay in planting or harvesting, or any expense or loss incurred for labor, substitute machinery, rental or for any other reason.

This warranty is subject to any existing conditions of supply that may directly affect our ability to obtain materials or manufacture replacement parts.

BW Implement reserves the right to make improvements in design or changes in specifications at any time, without incurring any obligation to owners of units previously sold.

WARRANTY REGISTRATION REQUIRED

BW Implement Company shall have no obligations under this warranty unless the completed Warranty Registration form is returned to BW Implement Company within thirty (30) days of the sale of the product.

SECURING WARRANTY SERVICE

Warranty service will be performed by any authorized BW Implement Company dealer. At the time warranty service is requested, the purchaser must present evidence showing the equipment is eligible for warranty service

UNAPPROVED MODIFICATIONS OR ATTACHMENTS

The warranty obligations of BW Implement Company shall be terminated if equipment is modified or altered and such modification or alteration has not been approved by BW Implement Company, or if the equipment has been equipped with an attachment not approved by BW Implement Company

ACCIDENTS AND NORMAL MAINTENANCE

The provisions of this warranty do not apply to any equipment or components thereof, which in the judgment of the dealer or BW implement Company has been damaged by: (1) improper use; (2) accident; (3) lack of maintenance; (4) improper storage; (5) in the case of Mulchers and Power Cultivators, when used on an articulated tractor; (6) use when the tractor PTO horsepower rating exceeds the maximum horsepower rating established by BW Implement Company; (7) if repairs have been made with parts other than those obtained through BW Implement Company; (8) any other casualty or negligence. The following items are considered "Normal Wear" items and are **NOT** covered by this warranty: Mulcher Teeth, Bed Shaper Parts, all UHMW and plastic parts, Disc Blades, Disc Scraper Blades, Chisel and Ripper points and Wear Plates, Box and Drag Scraper Blades, Shredder Flails, Til-N-Pak Rings.

Except as stated above, no dealer, employee or representative of the dealer or BW Implement Company has any authority to bind BW Implement Company to any affirmation of fact, representation, or warranty concerning BW Implement Company manufactured equipment unless made in writing and executed by the General Manager and Chief Executive Officer of BW Implement Company. No one is authorized to alter, modify or enlarge this warranty nor the exclusion, limitations and reservations except the General Manager and Chief Executive Officer of BW Implement Company.

This warranty is given in lieu of all other warranties, whether express or implied, and BW Implement Company makes no representations or warranties expressed or implied, including the implied warranties of merchantability and fitness for particular purpose, except as specifically described in the warranty.

Rev. 12/05



B.W. Implement Co.

288 W. Front Street
P.O. Box 758
Buttonwillow, Ca. 93206-0758

Phone (661) 764-5254
Fax (661) 764-5253
www.bwimp.com

THREE POINT REVERSIBLE TANDEM DISK

Thank you for purchasing a B.W. Implement Company Disk. Our equipment is manufactured to precise specifications using the best quality parts and materials available. With proper care and maintenance, this piece of equipment should last for many years. Before operating this machine, thoroughly read and become familiar with this manual.

Your Reversible Tandem Series Disk was assembled at the factory with the gangs set in the straight position for shipping purposes. Because of varying soil conditions, desired cutting depth, and tractor speed, gang adjustment must be made for even and uniform disking. Before using this disk, check all nuts and bolts to make sure everything is tightened.

ADJUSTMENT

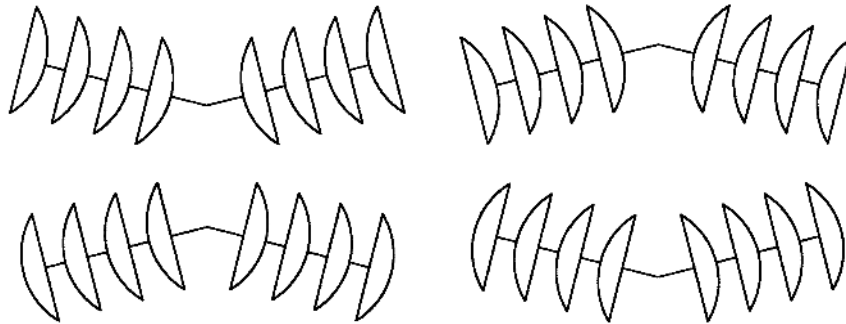
The design of the Reversible Tandem Disk permits more or less angle to be set to the front and rear gangs. Each gang is individually adjustable. The more angle set to the gangs, the greater soil breaking will occur, with increased penetration. A smoother and more leveling type of operation will occur if less angle is set to the gangs. To adjust the cutting angle on the gangs, remove the lynch pin from the adjusting pin, pull the adjusting pin out, slide the gang backward or forward to obtain the desired cutting angle, and then replace the adjusting pin and lynch pin.

The entire disk can be adjusted front and rear by using the top link on the tractor's three-point hitch. This will allow more pressure to be put on the front gangs so they will cut deeper, or on the rear gangs so they will cut deeper. Ideally, the best results will be attained if an equal amount of pressure is put on both gangs. The disk should also be adjusted laterally so that the outer disk blade of the right hand gangs and the left hand gangs cut at the same depth. This is done by adjusting and leveling the lift arms on the tractor hitch.

Your Reversible Tandem Disk is also equipped with a 1" x 3" shank and foot piece mounted in the center of the disk. The foot piece will accept most common types of cultivating sweeps. The shank, with the desired sweep mounted on it, will cut in the center behind the front gangs. Under normal conditions, a distance of 14" to 16" between the rear inside blades will create level soil in the center of the disk. The shank can be adjusted up or down by removing the pin, placing the shank at the desired depth, and replacing the pin through the shank. If ridging or leaving a furrow occurs, changing the speed of the tractor or changing the rear gang angle should correct the problem. If the problem persists, the rear gangs may need to be repositioned.

The Three Point Reversible Tandem Disk's design also allows it to be pulled from the opposite side. In order to obtain this position the three point hitch must be moved to the opposite side. Remove the lynch pins from the top link brace pins, and then remove the pins and bar. Remove lynch pins from topmast link pins, and holding the topmast remove the link pins. Set topmast on opposite side of mainframe and replace link pins and lynch pins. Replace top link brace, pins and lynch pins. Remove lynch pin and pin from shank, take shank and place in topmast pocket and replace pin and lynch pin. All gangs must be adjusted by removing lynch pin and pin from the adjusting brace and turning gangs to correct angles. After angles have been set, the disk should be checked for further adjustments as mentioned before.

**TRACTOR
Normal Mode**



**TRACTOR
Reverse Mode**

Improper adjustments can cause disking problems. If problems should occur after following instructions in the manual, check the Trouble Shooting chart below for possible remedies.

SCRAPER ASSEMBLY

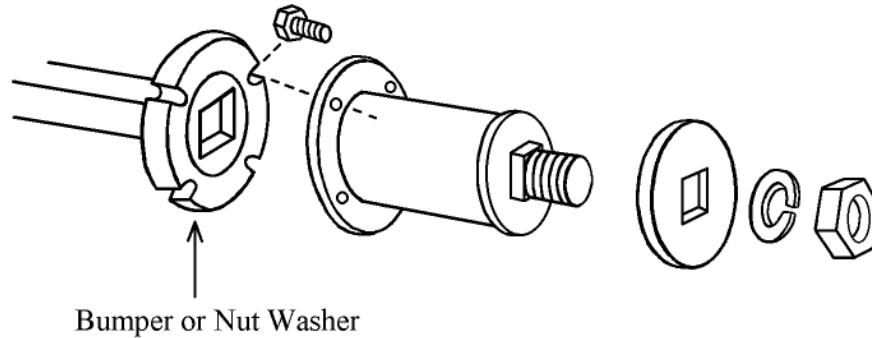
Scraper blades and mounts were assembled on the disk at the factory. Each scraper is individually mounted and adjusted. To adjust the scraper, loosen the nut on the mount arm, slide the scraper in or out until it is approximately 3/8" away from the disk blade, and tighten nut.

MAINTENANCE

- Regularly check all nuts and bolts and make sure they are tight.
- Regularly check all pins and lynch pins to make sure they are in place.
- Check scraper blades and replace as needed.
- If bearing dirt shields are used, check and replace as needed.
- VT disks are equipped with non-greasable sealed ball bearings. Regularly check bearings and make sure gang turns freely. Replace bearing if needed.
- Store disk out of weather

OPTIONAL SPOOL EXTENSION

All VT disks are equipped with an end washer and nut washer, which will accommodate an extension spool. Extension spools are designed to fit either side of a gang and blades will mount on spool for either side of gang. See illustration below for mounting instructions.

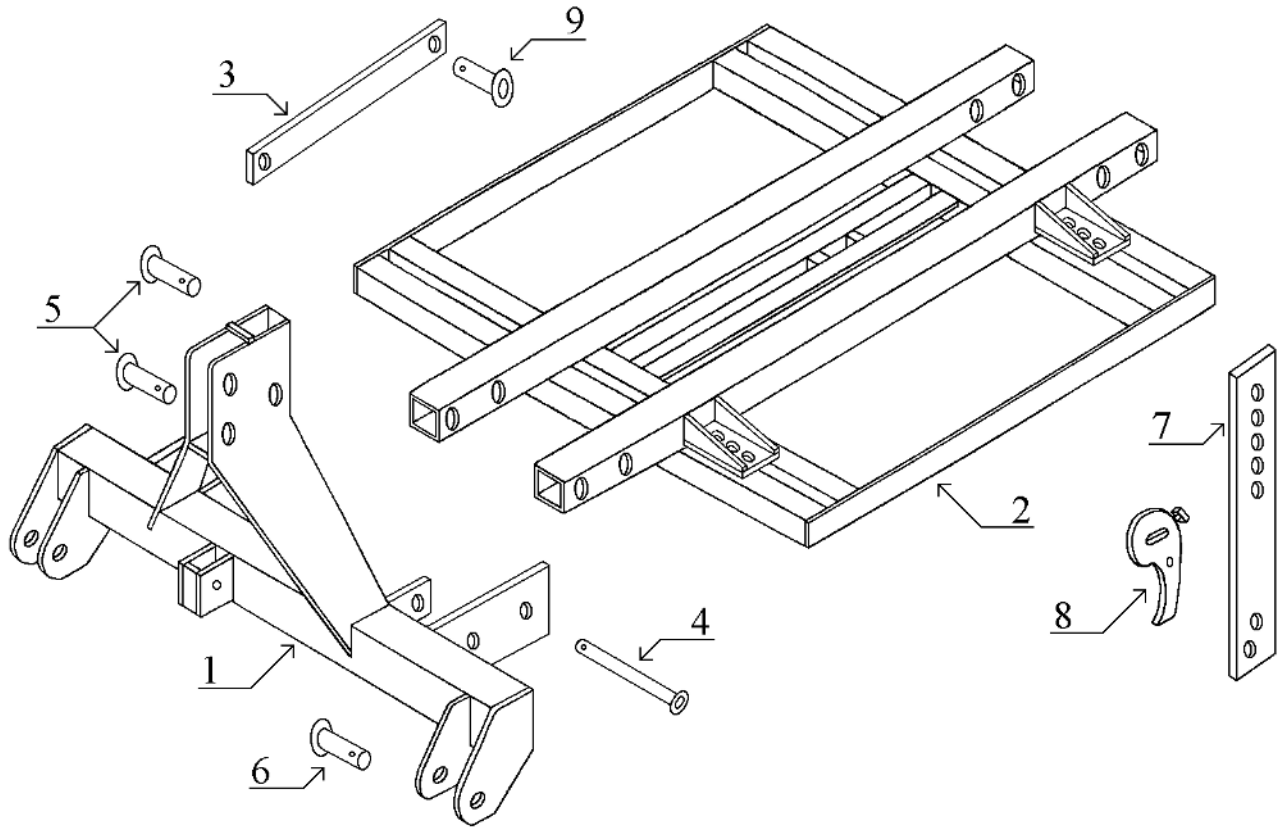


TROUBLE SHOOTING CHART

PROBLEM	POSSIBLE REMEDY
Rear gang leaving ridge in center	<ul style="list-style-type: none"> • Space rear gangs proper distance apart (14" - 16"). • Decrease angles in rear gang and/or increase angle in front gang. • Decrease the operating depth of rear gangs and/or increase the depth of the front gangs.
Bedding on each side of disk	<ul style="list-style-type: none"> • Increase angles on rear gang and/or increase depth of rear gangs. • Decrease angle of front gang and/or decrease depth of front gang. • Space rear gangs proper distance (14" - 16").
Disk will not penetrate	<ul style="list-style-type: none"> • Increase angle on all gangs equally.
Disk moves from side to side	<ul style="list-style-type: none"> • Make sure all gangs are equal distant from center of frame. • Correct gang angle settings.
Furrow left directly behind tractor	<ul style="list-style-type: none"> • Increase angle of gangs to increase depth of cut. • Increase tractor horsepower or decrease width of cut.
Bending front outside disk blade and/or gang bolt	<ul style="list-style-type: none"> • Lift disk off ground before turning.
Bearing failure	<ul style="list-style-type: none"> • Check gang bolt. If bent, straighten or replace as needed. • Tighten nut on gang bolt if needed.
Gang bolt bending	<ul style="list-style-type: none"> • Check nut on gang bolt, tighten if needed. • Check spacer spool, replace if needed.

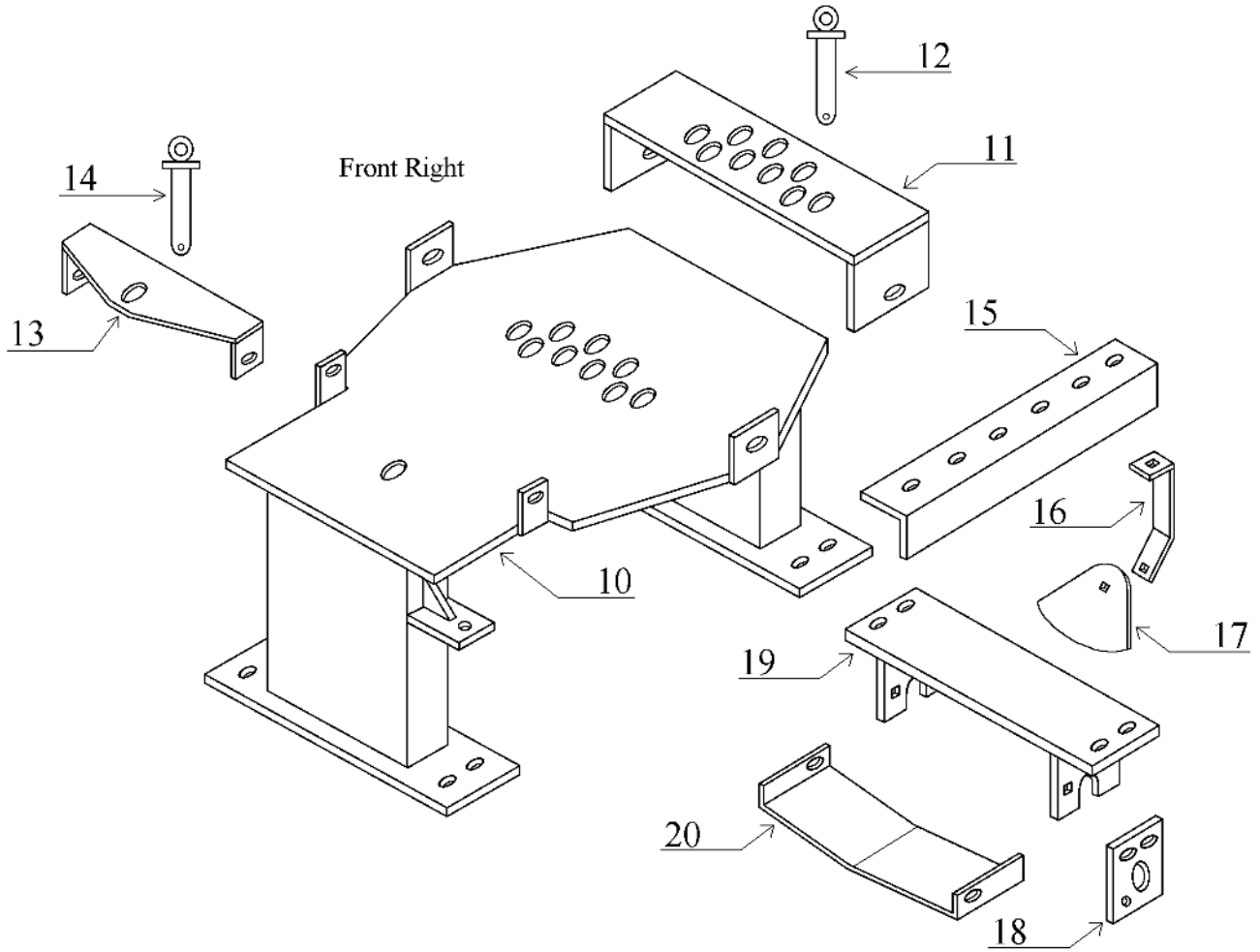
– THIS PAGE LEFT BLANK –

Main Frame



Ref.	Part No.	Description
1	185110	Top Mast
2	185111	Main Frame – 12 & 14 Blade
	185117	Main Frame – 16, 18 & 20 Blade
	*****	Main Frame – 22 & 24 Blade
3	185112	Brace
4	185113	A-Frame Link Pin
5	185003	Upper Top Link Pin – CAT II
6	185115	Lower Pull Pin – CAT II
7	185083	1" x 3" Shank
8	185084	Foot Piece – 1"
9	185106	Lower Brace Link Pin

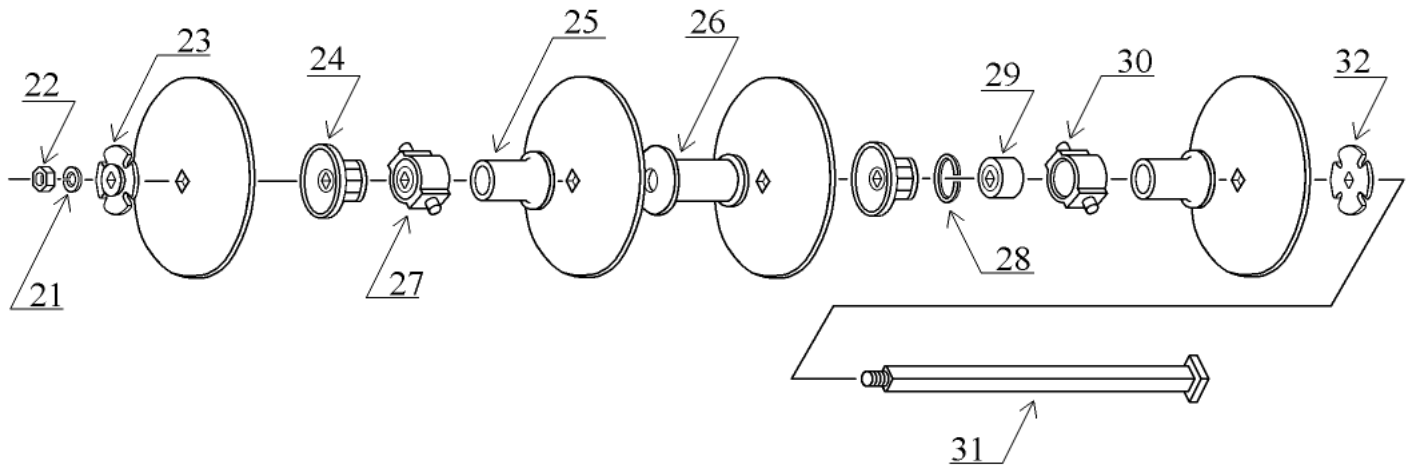
Gang Frame Assembly



Gang Frame Assembly

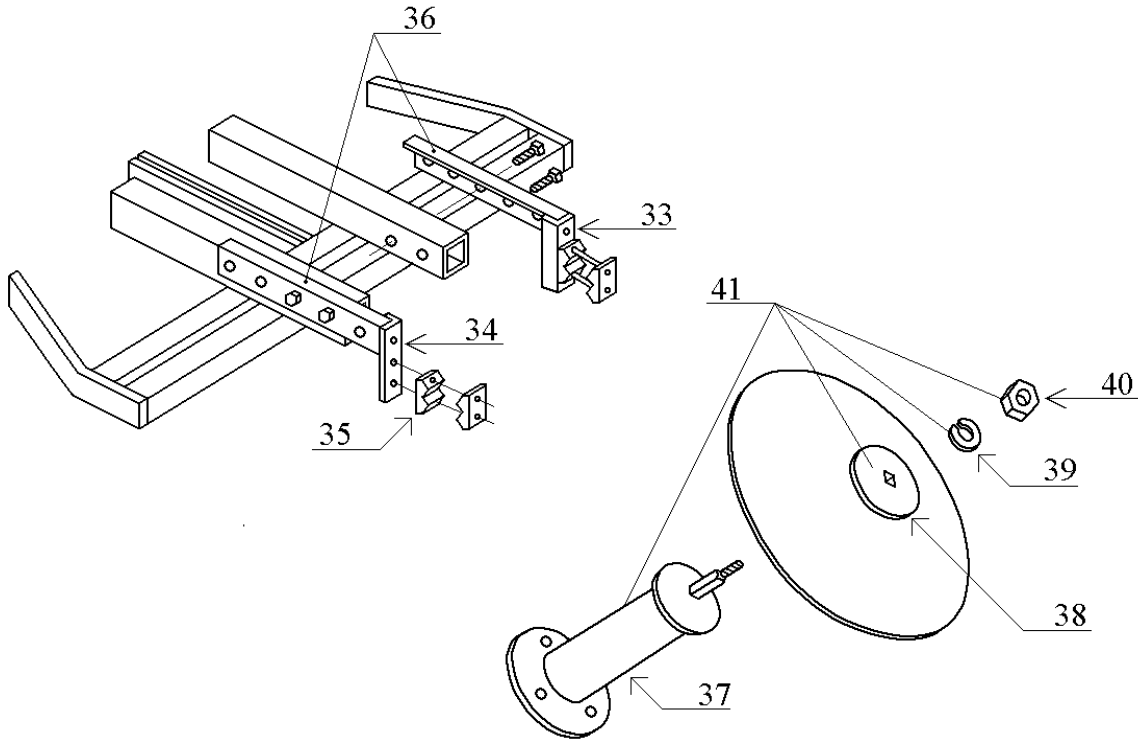
Ref.	Part No.	Description
10	186010MD3	3 Blade Front Disk Frame (Right or Left)
	186010MD3FF	3 Blade Flange Front Disk Frame (Right or Left)
	186011MD3	3 Blade Rear Disk Frame (Right or Left)
	186011MD3FR	3 Blade Flange Rear Disk Frame (Right or Left)
	186010MD4	4 Blade Front Disk Frame (Right or Left)
	186010MD4FF	4 Blade Flange Front Disk Frame (Right or Left)
	186011MD4	4 Blade Rear Disk Frame (Right or Left)
	186011MD4FR	4 Blade Flange Rear Disk Frame (Right or Left)
	186010MD5	5 Blade Front Disk Frame (Right or Left)
	186011MD5	5 Blade Rear Disk Frame (Right or Left)
	186010MD6	6 Blade Front Disk Frame (Right or Left)
	186011MD6	6 Blade Rear Disk Frame (Right or Left)
11	185034	Gang Adj. Hanger
12	185037	Gang Adj. Pin
13	185097	Pivot Clamp
14	185099	Pivot Clamp Pin
15	186029	Scraper Bar Left – for 3 Blade Gang
	186030	Scraper Bar Right – for 3 Blade Gang
	186031	Scraper Bar Left – for 4 Blade Gang
	186032	Scraper Bar Right – for 4 Blade Gang
	186033	Scraper Bar Left – for 5 Blade Gang
	186034	Scraper Bar Right – for 5 Blade Gang
	186035	Scraper Bar Left – for 6 Blade Gang
186036	Scraper Bar Right – for 6 Blade Gang	
16	WO6041L	Scraper Mount Arm – Left
	WO6041R	Scraper Mount Arm – Right
17	WO6042	Scraper Blade
18	WO6072	Bearing Holder
19	WO6081	Bearing Mount
20	WO6082	Bearing Guard

Gang Assembly



Ref.	Part No.	Description
21	200007-24	Axle Nut – 1 ½”
22	200005-24	Axle Lock Washer
23	185053	Axle Nut Washer
24	185052	Half Spool Concave – 1 ½”
25	185051	Half Spool Convex – 1 ½”
26	WO6029	Full Spool – 1 ½”
27	770013	Bearing & Housing Assembly
28	770016	Snap Ring
29	770017	Bearing, 1 ½” Sq. Bore
30	770018	Bearing Housing
31	185049-A	3 Blade Axle – 1 ½”
	185049	4 Blade Axle – 1 ½”
	185050	5 Blade Axle – 1 ½”
	185050-A	6 Blade Axle – 1 ½”
32	185054	Axle Washer

Tool Bar Attachment & Furrow Filler



Ref.	Part No.	Description
33	185021	Tool Bar Bracket Right – 1 Req.
34	185022	Tool Bar Bracket Left – 1 Req.
35	185023	Clamp – 4 Req.
36	185070	Tool Bar Attachment Complete – 1 Req.
37	185018 185018E	Extension Spool – Concave or Convex – 1 ½” – 1 Req. 6” Extension Spool
38	185019	Extension Spool Washer – Concave or Convex – 1 ½” – 1 Req.
39	200005-24	Axle Lock Washer – 1 ½” – 1 Req.
40	200005-24	Axle Nut – 1 ½” – 1 Req.
41	185078	Furrow Attachment Complete Less Blade – 1 ½” – 1 Req.